

CAMLOCK FITTINGS

WELLGROW INDUSTRIES CORP.

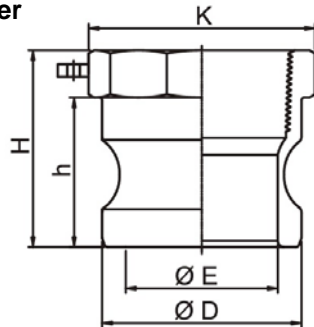


- ▲ Female Thread Adapter
- ▲ Male Thread Coupler
- ▲ Hose Shank Coupler
- ▲ Female Thread Coupler
- ▲ Dust Cap
- ▲ Dust Plug
- ▲ Hose Shank Adapter
- ▲ Male Thread Adapter

Camlock Fittings

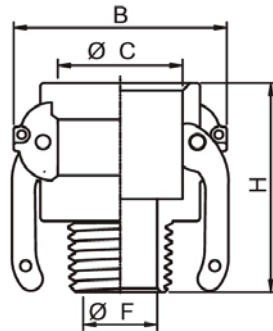
Material: Stainless Steel, Aluminum and Brass

Type A Female Thread Adapter



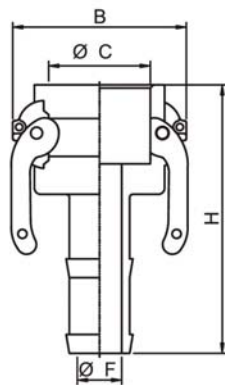
Size	1/2	3/4	1	1-1/4	1-1/2	2	2-1/2	3	4	5	6
D	24	32	37	45	53	63	76	92	120	146	176
E	13	21	24	31	39	48	60	74	102	126	152
K	27	33	39	48	56	68	83	96	124	160	185
h	25	28	33	40	40	46	49	51	51	54	56
H	38	38	46	53	53	61	77	72	75	78	84

Type B Male Thread Coupler



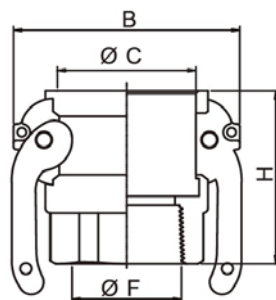
Size	1/2	3/4	1	1-1/4	1-1/2	2	2-1/2	3	4	5	6
B	44	50	60	80	89	97	110	135	165	190	254
C	25	32	37	46	54	64	76	92	120	146	176
F	14	19	26	32	38	50	65	77	101	126	146
H	47	51	60	70	72	77	85	89	93	96	110

Type C Hose Shank Coupler



Size	1/2	3/4	1	1-1/4	1-1/2	2	2-1/2	3	4	5	6
B	44	50	60	80	89	97	110	135	165	190	254
C	25	32	37	46	54	64	76	92	120	146	176
F	8	15	20	27	33	44	56	65	90	116	144
H	67	85	97	103	108	122	138	158	165	182	204

Type D Female Thread Coupler

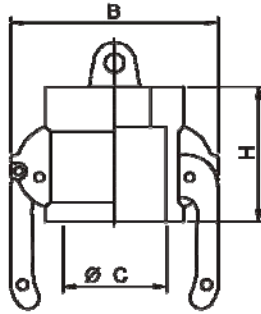


Size	1/2	3/4	1	1-1/4	1-1/2	2	2-1/2	3	4	5	6
B	44	50	60	80	89	97	110	135	165	190	254
C	25	32	37	46	54	64	76	92	120	146	176
F	14	22	25	32	38	48	61	76	101	132	146
H	48	50	58	64	68	72	77	89	94	96	108

Camlock Fittings

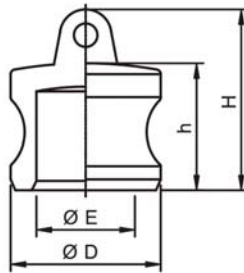
Material: Stainless Steel, Aluminum and Brass

Type DC Dust Cap



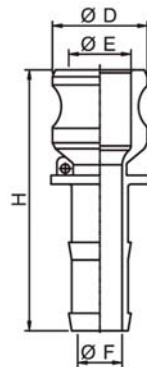
Size	1/2	3/4	1	1-1/4	1-1/2	2	2-1/2	3	4	5	6
B	44	50	60	80	89	97	110	135	165	190	254
C	25	32	37	46	54	64	76	92	120	146	176
H	32	35	40	46	48	50	55	57	57	59	63

Type DP Dust Plug



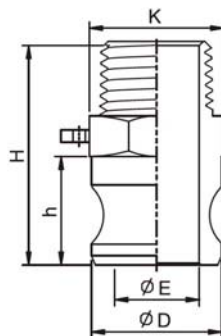
Size	1/2	3/4	1	1-1/4	1-1/2	2	2-1/2	3	4	5	6
D	24	32	37	45	53	63	76	92	120	146	176
E	13	21	25	30	38	48	60	74	102	126	155
h	27	26	31	39	41	45	46	48	48	51	56
H	38	38	44	51	51	60	63	68	67	79	85

Type E Hose Shank Adapter



Size	1/2	3/4	1	1-1/4	1-1/2	2	2-1/2	3	4	5	6
D	24	32	37	45	53	63	76	92	120	146	176
E	13	19	24	31	38	46	60	73	102	126	155
F	8	15	20	27	33	45	51	69	92	116	144
H	27	89	106	110	112	130	141	165	178	187	210

Type F Male Thread Adapter



Size	1/2	3/4	1	1-1/4	1-1/2	2	2-1/2	3	4	5	6
D	24	32	37	45	53	63	76	92	120	146	176
E	13	19	25	31	38	47	58	73	102	126	152
K	27	33	41	45	53	63	83	93	121	168	185
h	25	28	34	40	41	47	49	51	51	54	56
H	53	55	66	78	78	85	100	100	108	111	126