

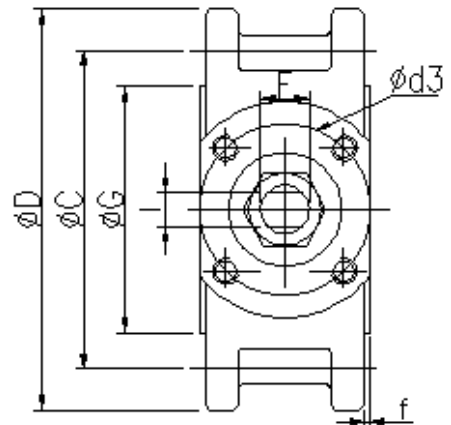
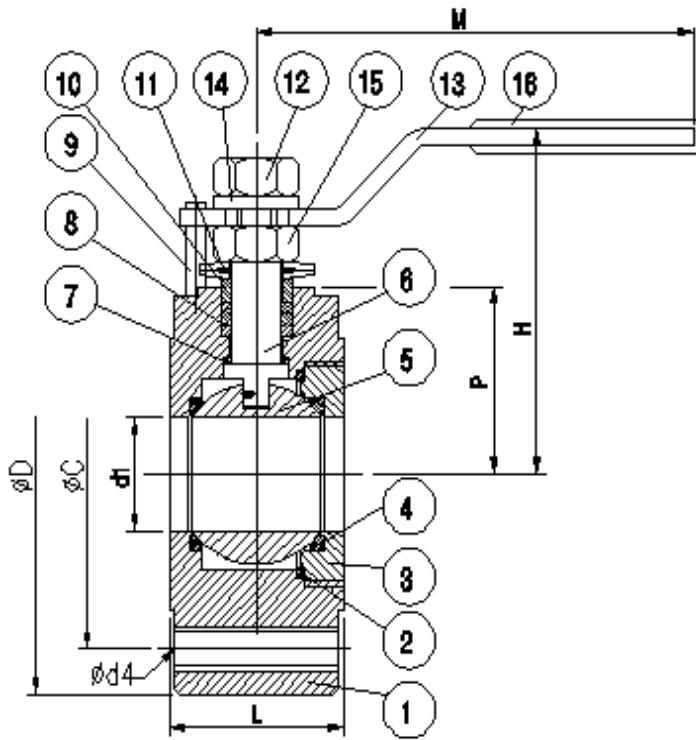
W1F-1 Wafer Type Ball Valve Flanged 150#, Full Port

Features

1. Face to face: ANSI B16.10
2. End flange: ANSI B16.5
3. Test: API 598
4. Design: ANSI 16.34
5. Investment casting
6. Adjustable Stem Packing, Blow-out Proof Stem
7. Pressure: 150 LBS

Options

1. Pneumatic/ Electric Actuator



Material List

NO.	PART NAME	MATERIAL
1	BODY	CF8M, CF8 (1.4408)
2	GASKET	PTFE
3	RING NUT	CF8M, CF8 (1.4408)
4	SEAT	PTFE
5	BALL	SS316, 304 (1.4408)
6	STEM	SS316
7	STEM SEAL	PTFE
8	STEM PACKING	PTFE
9	STOP	SS304
10	RING	SS304
11	BEVEL WASHER	SS301
12	NUT	SS304
13	HANDLE	SS304
14	SPRING WASHER	SS304
15	NUT	SS304
16	PLASTIC COVER	PLASTIC

Dimension

SIZE		ISO-5211	ØC	ØD	Ød3	Ød4	d1	F	I	ØG	H	L	L1	M	P	f
DN15	1/2"	F03	60.5	88.9	36	1/2"	16	9.6	6.35	35.1	70	35	31	116	32	1.6
DN20	3/4"	F03	69.9	98.6	36	1/2"	20	9.6	6.35	42.9	74	38	34	116	38	1.6
DN25	1"	F03	79.2	108.0	36	1/2"	25	9.6	6.35	50.8	75	44	38	165	42	1.6

W1F-1 Wafer Type Ball Valve Flanged 150#, Full Port

Features

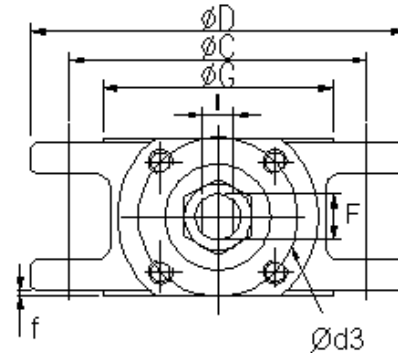
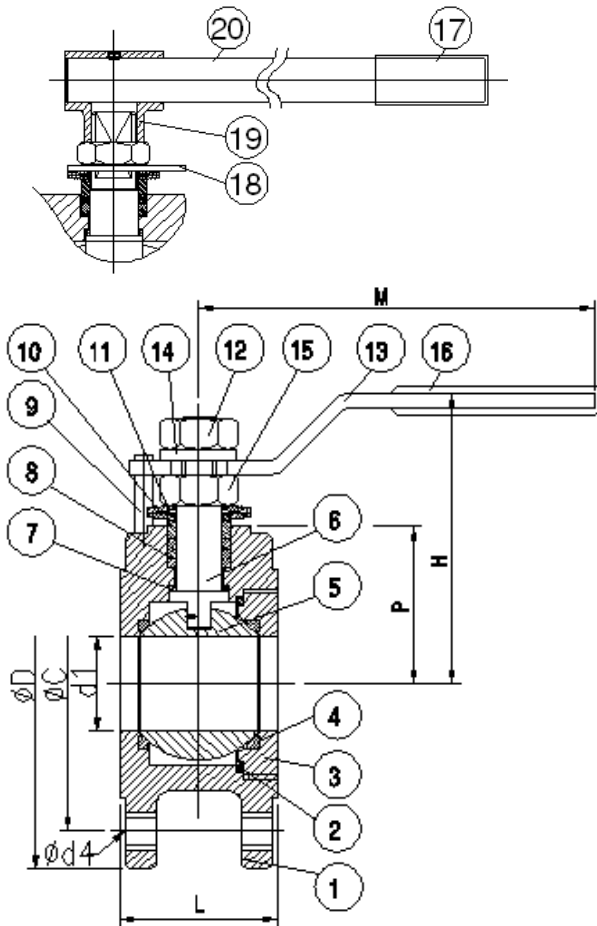
1. Face to face: ANSI B16.10
2. End flange: ANSI B16.5
3. Test: API 598
4. Design: ANSI 16.34
5. Investment casting
6. Adjustable Stem Packing, Blow-out Proof Stem
7. Pressure: 150 LBS

Options

1. Pneumatic/ Electric Actuator



DN125~DN150:



Material List

NO.	PART NAME	MATERIAL
1	BODY	CF8M, CF8 (1.4408)
2	GASKET	PTFE
3	RING NUT	CF8M, CF8 (1.4408)
4	SEAT	PTFE
5	BALL	SS316, 304 (1.4408)
6	STEM	SS316
7	STEM SEAL	PTFE
8	STEM PACKING	PTFE
9	STOP	SS304
10	RING	SS304
11	BEVEL WASHER	SS301
12	NUT	SS304
13	HANDLE	SS304
14	SPRING WASHER	SS304
15	NUT	SS304
16	HANDLE COVER	PLASTIC
17	HANDLE COVER	PLASTIC
18	STOP BOLT	SS304
19	HANDLE ADAPTER	CF8
20	HANDLE	STEEL

DIMENSION

SIZE	ISO-5211	ØC	ØD	Ød2	Ød3	Ød4	d1	F	ØG	H	I	L	L1	M	P	f	
1-1/4"	DN32	F04	88.9	117.3	32	42	M16	32	16	63.5	85	8.5	54	48	165	50	1.6
1-1/2"	DN40	F05	98.6	127.0	35	50	M16	38	16	73.2	89	8.5	62	54	193	54	1.6
2"	DN50	F05	120.7	152.4	35	50	M16	50	16	91.9	98	8.5	80	72	193	62	1.6
2-1/2"	DN65	F07	139.7	177.8	53	70	M16	64	20	104.6	129	12	101	93	235	82	1.6
3"	DN80	F07	152.4	190.5	53	70	M16	76	20	127.0	138	12	118	110	235	91	1.6
4"	DN100	F10	190.5	228.6	55	102	M16	96	24	157.2	164	16	150	144	329	107	1.6
6"	DN150	F12	241.3	279.4	60	125	M20	135	27	215.9	198	17	182	177	460	130	1.6