

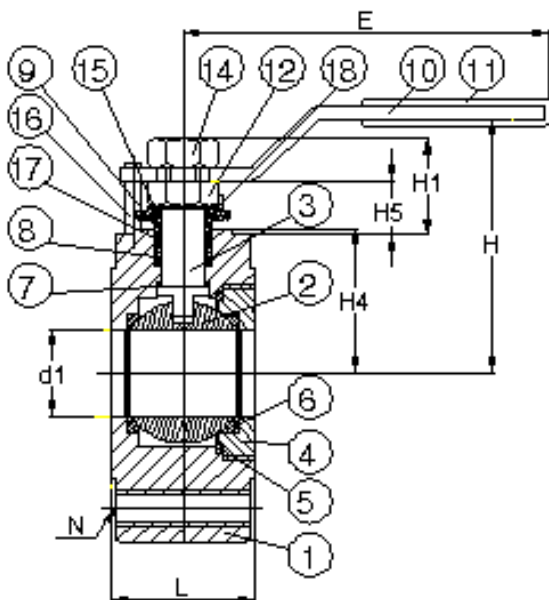
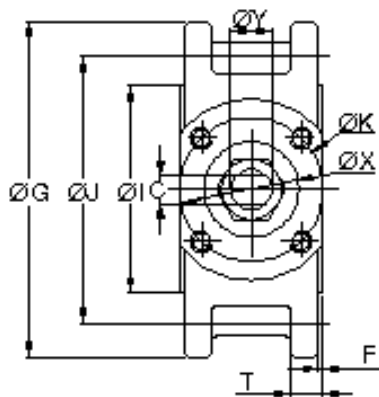
W1F-16 Wafer Type Ball Valve Flanged PN16, Full Port

Features

1. Face to face: DIN 3202 F4/F5
2. End flange: PN 16 DIN 2633
3. Design: ANSI 16.34
4. Investment casting
5. Blow-out proof stem
6. Pressure: PN16

Options

1. Carbon/ Stainless steel body construction
2. Locking device available



Material List

NO.	PART NAME	MATERIAL	
1	BODY	SS316	WCB
2	BALL	SS316	SS304
3	STEM	SS316	SS304
4	INSERT CAP	SS316	WCB
5	BODY SEAL	PTFE	
6	SEAT	PTFE	
7	THRUST WASHER	PTFE	
8	STEM PACKING	PTFE	
9	GLAND	SS304	
10	HANDLE	SS304	
11	HANDLE COVER	PLASTIC	
12	STEM NUT	SS304	
14	HANDLE NUT	SS304	
15	BELLEVILLE WASHER	SS301	
16	STOP PIN	SS304	
17	PACKING FOLLOWER	PTFE.+25%G.F.	
18	TAB WASHER	SS304	

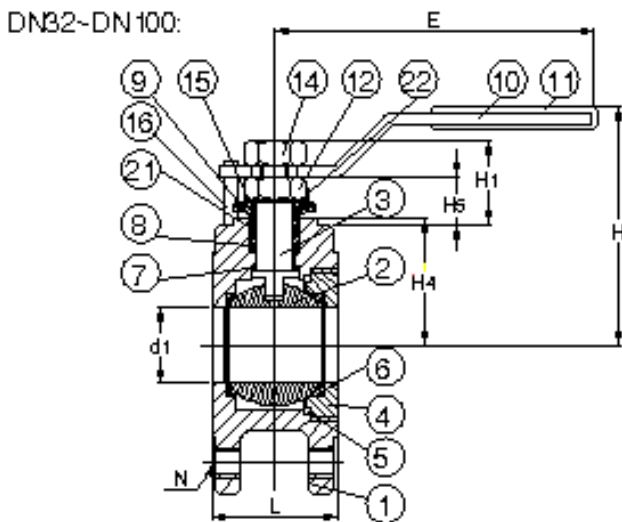
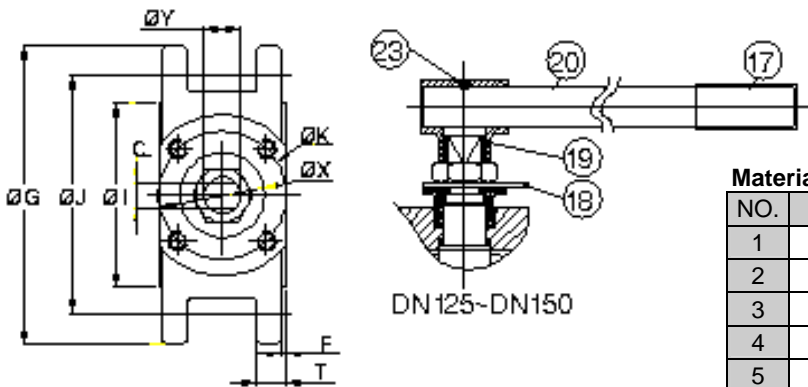
Dimension

SIZE	d1	L	E	H	H1	H4	H5	C	ØX	ØY	ØG	ØJ	ØI	T	F	ØK	N
DN15 1/2"	15	35	116	70	21.0	32	11.6	6.35	25	9.6	95	65	45	7.0	2	36	M12
DN20 3/4"	20	40	116	74	18.0	38	9.6	6.35	25	9.6	105	75	58	7.0	2	36	M12
DN25 1"	25	44	165	75	18.3	42	9.6	6.35	25	9.6	115	85	65	7.5	2	36	M12

W1F-16 Wafer Type Ball Valve Flanged PN16, Full Port

Features

1. Flange ends conform to DIN 2545 PN16
2. Investment casting
3. Adjustable Stem Packing, Blow-out Proof Stem
4. Pressure: PN16



Material List

NO.	PART NAME	MATERIAL	
1	BODY	SS316	WCB
2	BALL	SS316	SS304
3	STEM	SS316	SS304
4	INSERT CAP	SS316	WCB
5	BODY SEAT	PTFE	
6	SEAT	PTFE	
7	THRUST WASHER	PTFE	
8	STEM PACKING	PTFE	
9	GLAND	SS304	
10	HANDLE	SS304	
11	HANDLE COVER	PLASTIC	
12	STEM NUT	SS304	
14	HANDLE NUT	SS304	
15	BELLEVILLE WASHER	SS301	
16	STOP PIN	SS304	
17	HANDLE COVER	PLASTIC	
18	STOP BOLT	SS304	
19	HANDLE ADAPTER	SS304	
20	HANDLE	STEEL	
21	PACKING FOLLOWER	PTFE.+25%G.F.	
22	TAB WASHER	SS304	
23	SET BOLT	SS304	

Dimension

SIZE	d1	L	E	H	H1	H4	H5	C	ØX	ØY	ØG	ØJ	ØI	T	F	ØK	N
DN32 1-1/4"	32	54	165	87	26.5	50	15.6	8.0	32	11.2	140	100	78	17.0	2	42	M16
DN40 1-1/2"	38	62	193	90	26.0	54	15.6	8.0	35	11.2	150	110	88	19.0	2	50	M16
DN50 2"	50	80	193	99	25.0	62	14.6	8.0	35	11.2	165	125	102	19.5	2	50	M16
DN65 2-1/2"	64	101	235	141	31.0	82	17.8	9.5	53	16.0	185	145	122	17.0	2	70	M16
DN80 3"	76	118	235	150	31.5	91	18.8	9.5	53	16.0	200	160	138	20.0	3	70	M16
DN100 4"	96	150	266	172	51.0	107	28.0	17.0	55	28.0	220	180	158	21.0	3	102	M16
DN125 5"	118	179	400	205	50.0	117	31.0	17.0	55	28.0	250	210	188	22.0	3	102	M16
DN150 6"	135	202	600	220	50.0	130	31.0	17.0	60	28.0	285	240	212	22.0	3	125	M20