

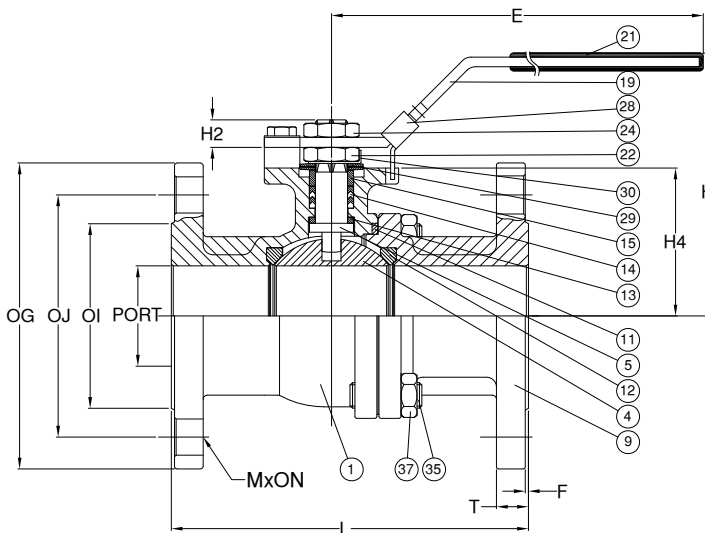
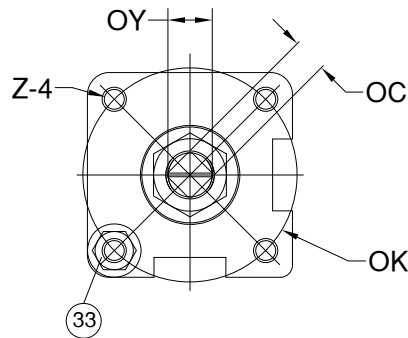
## VBF2-16/VBF2-40 2 Piece Ball Valve Flanged PN16/PN40, Full Port

### Features

- 1.Face to face: DIN 3202 F4/F5
- 2.End Flange: DIN2633
- 3.Design: ANSI B16.34
- 4.Investment casting
- 5.Blow-out proof stem
- 6.Pressure: PN16/PN40

### Options

- 1.Carbon/ Stainless steel body construction
- 2.Locking device available if requested



### Materials List

NO.	PART NAME	MATERIAL	
1	BODY	1.4408/ EN1503-1	1.0619/ EN1503-1
4	BALL	SS316	SS304
5	STEM	SS316	SS304
9	END CAP	1.4408/ EN1503-1	1.0619/ EN1503-1
11	BODY SEAL	PTFE.	
12	SEAT	RTFE.	
13	THRUST WASHER	PTFE.	
14	STEM PACKING	PTFE.	
15	GLAND BUSH	SS304	
19	HANDLE	SS304	
21	HANDLE COVER	PLASTIC	
22	STEM NUT	SS304	
24	HANDLE NUT	SS304	
28	LOCKING PAD	SS304	
29	BELLEVILLE WASHER	SS301	
30	TAB WASHER	SS304	
33	STOP PIN	SS304	
35	BODY BOLT	ASTM A193 Gr.B8	ASTM A193 Gr.B7
37	BOLT NUT	ASTM A193 Gr.8	ASTM A193 Gr.2HM

### PN16/PN40 Dimensions

Size	PORT	L	E	H	H2	H4	C	ØY	ØG	ØJ	ØI	T	F	M	ØN	ØK	Z	
DN15	1/2"	15.0	115.0	132.0	80.0	8.5	38.5	9.0	11.2	95.0	65.0	45.0	16.0	2.0	4	14.0	42.0	M5*0.8P
DN20	3/4"	20.0	120.0	132.0	84.5	8.5	42.5	9.0	11.2	105.0	75.0	58.0	18.0	2.0	4	14.0	42.0	M5*0.8P
DN25	1"	25.0	125.0	166.0	102.0	12.0	52.0	11.0	14.3	115.0	85.0	68.0	18.0	2.0	4	14.0	50.0	M6*1.0P
DN32	1-1/4"	32.0	130.0	166.0	105.0	12.0	56.0	11.0	14.3	140.0	100.0	78.0	18.0	2.0	4	18.0	50.0	M6*1.0P
DN40	1-1/2"	38.0	140.0	198.0	125.0	12.0	65.3	14.0	18.0	150.0	110.0	88.0	18.0	2.0	4	18.0	70.0	M8*1.25P
DN50	2"	50.0	150.0	198.0	132.0	12.0	73.8	14.0	18.0	165.0	125.0	102.0	20.0	2.0	4	18.0	70.0	M8*1.25P

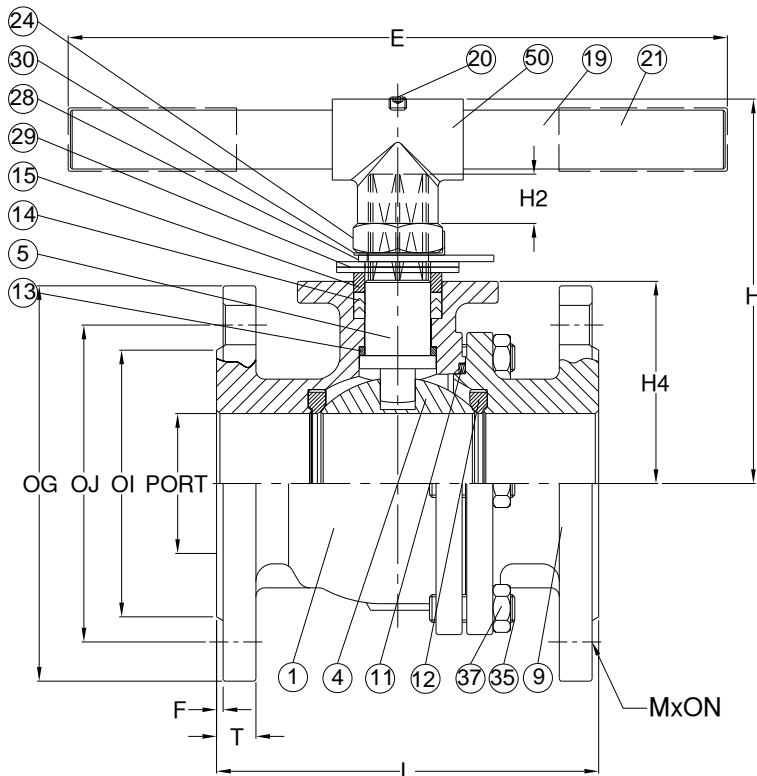
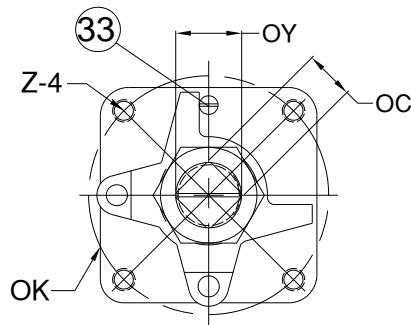
## VBF2-16/VBF2-40 2 Piece Ball Valve Flanged PN16/PN40, Full Port

### Features

- 1.Face to face: DIN 3202 F4/F5
- 2.End Flange: DIN2633
- 3.Design: ANSI B16.34
- 4.Investment casting
- 5.Blow-out proof stem
- 6.Pressure: PN16/PN40

### Options

- 1.Carbon/ Stainless steel body construction
- 2.Locking device available if requested



### Materials List

NO.	PART NAME	MATERIAL	
1	BODY	1.4408/ EN1503-1	1.0619/ EN1503-1
4	BALL	SS316	SS304
5	STEM	SS316	SS304
9	END CAP	1.4408/ EN1503-1	1.0619/ EN1503-1
11	BODY SEAL	PTFE.	
12	SEAT	PTFE.	
13	THRUST WASHER	PTFE.	
14	STEM PACKING	PTFE.	
15	GLAND BUSH	SS304	
19	HANDLE	LRON	
20	SET BOLT	SS304	
21	HANDLE COVER	PLASTIC	
24	HANDLE NUT	SS304	
28	STOP PLATE	SS304	
29	BELLEVILLE WASHER	SS301	
30	TAB WASHER	SS304	
33	STOP PIN	SS304	
35	BODY BOLT	ASTM A193 Gr.B8	ASTM A193 Gr.B7
37	BOLT NUT	ASTM A193 Gr.8	ASTM A193 Gr.2HM
50	HANDLE ADAPTER	ASTM A351 Gr. CF8	

### PN16 Dimensions

Size	PORT	L	E	H	H2	H4	C	ØY	ØG	ØJ	ØI	T	F	M	ØN	ØK	Z	
DN65	2-1/2"	64.0	170.0	300.0	178.0	23.0	95.5	17.0	22.3	185.0	145.0	122.0	18.0	2.0	4	18.0	102.0	M10*1.5P
DN80	3"	76.0	180.0	300.0	188.0	23.0	101.7	17.0	22.3	200.0	160.0	138.0	20.0	2.0	8	18.0	102.0	M10*1.5P
DN100	4"	100.0	190.0	450.0	202.0	23.0	119.0	17.0	22.3	220.0	180.0	158.0	20.0	2.0	8	18.0	102.0	M10*1.5P

### PN40 Dimensions

Size	PORT	L	E	H	H2	H4	C	ØY	ØG	ØJ	ØI	T	F	M	ØN	ØK	Z	
DN65	2-1/2"	64.0	170.0	300.0	178.0	23.0	95.5	17.0	22.3	185.0	145.0	122.0	18.0	2.0	8	18.0	102.0	M10*1.5P
DN80	3"	76.0	180.0	300.0	188.0	23.0	101.7	17.0	22.3	200.0	160.0	138.0	20.0	2.0	8	18.0	102.0	M10*1.5P
DN100	4"	100.0	190.0	450.0	202.0	23.0	119.0	17.0	22.3	235.0	190.0	158.0	24.0	2.0	8	18.0	102.0	M10*1.5P

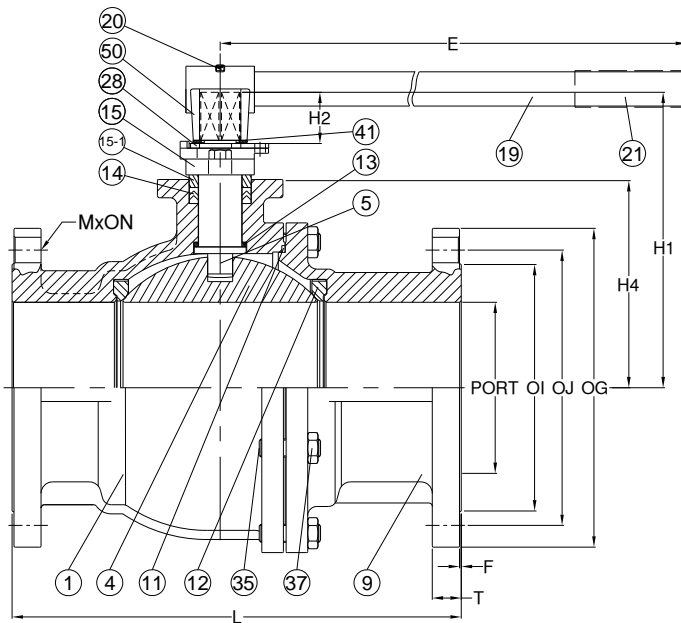
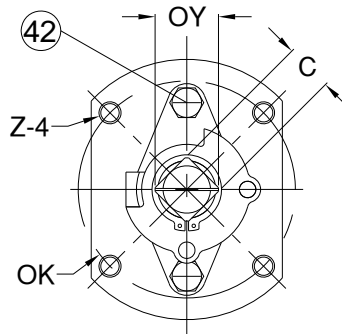
**VBF2-16/VBF2-40 2 Piece Ball Valve Flanged PN16/PN40, Full Port**

**Features**

- 1.Face to face: DIN 3202 F4/F5
- 2.End Flange: DIN2633
- 3.Design: ANSI B16.34
- 4.Investment casting
- 5.Blow-out proof stem
- 6.Pressure: PN16/PN40

**Options**

- 1.Carbon/ Stainless steel body construction
- 2.Locking device available if requested



**Materials List**

NO.	PART NAME	MATERIAL	
1	BODY	1.4408/ EN1503-1	1.0619/ EN1503-1
4	BALL	SS316	SS304
5	STEM	SS316	SS304
9	END CAP	1.4408/ EN1503-1	1.0619/ EN1503-1
11	BODY SEAL	PTFE.	
12	SEAT	PTFE.+15%G.F.	
13	THRUST WASHER	PTFE.	
14	STEM PACKING	PTFE.	
15	GLAND	SS304	1.0619/ EN1503-1
15-1	GLAND BUSH	SS304	
19	HANDLE	LRON	
20	SET BOLT	SS304	
21	HANDLE COVER	PLASTIC	
28	STOP PLATE	SS304	
35	BODY BOLT	ASTM A193 Gr.B8	ASTM A193 Gr.B7
37	BOLT NUT	ASTM A193 Gr.8	ASTM A193 Gr.2HM
41	SNAP RING	SS304	
42	GLAND BOLT	SS304	
50	HANDLE ADAPTER	SS304	

**PN16 Dimensions**

Size	PORT	L	E	H	H2	H4	C	ØY	ØG	ØJ	ØI	T	F	M	ØN	ØK	Z	
DN125	5"	125.0	325.0	600.0	233.0	45.0	163.0	27.0	36.0	250.0	210.0	188.0	22.0	2.0	8	Ø18.0	125	M12*1.75P
DN150	6"	150.0	350.0	800.0	259.0	45.0	182.5	27.0	36.0	285.0	240.0	212.0	22.0	20.	8	Ø22.0	125	M12*1.75P

**PN40 Dimensions**

Size	PORT	L	E	H	H2	H4	C	ØY	ØG	ØJ	ØI	T	F	M	ØN	ØK	Z	
DN125	5"	125.0	325.0	600.0	233.0	45.0	163.0	27.0	36.0	270.0	220.0	188.0	26.0	2.0	8	Ø26.0	125	DN65
DN150	6"	150.0	350.0	800.0	259.0	45.0	182.5	27.0	36.0	300.0	250.0	218.0	28.0	20.	8	Ø26.0	125	DN80