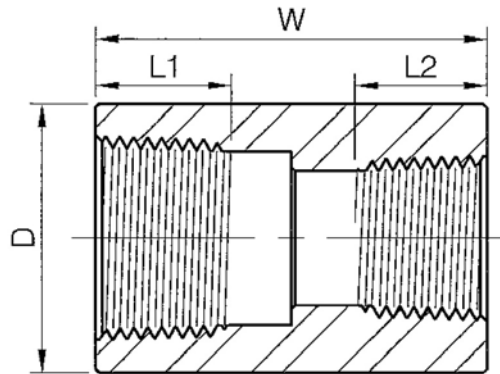
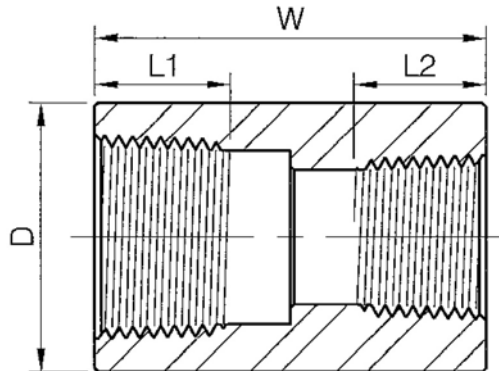


Reducing Coupling Threaded



Nom. Pipe Size	D		W	L1	L2
	3000Lb	6000Lb			
1/4"x1/8"	19.0	25.0	35.0	11.4	8.8
3/8"x1/8"	22.0	32.0	38.0	12.4	8.8
3/8"x1/4"	22.0	32.0	38.0	12.4	11.4
1/2"x1/8"	28.0	38.0	48.0	14.9	8.8
1/2"x1/4"	28.0	38.0	48.0	14.9	11.4
1/2"x3/8"	28.0	38.0	48.0	14.9	12.4
3/4"x1/8"	35.0	44.0	51.0	16.8	8.8
3/4"x1/4"	35.0	44.0	51.0	16.8	11.4
3/4"x3/8"	35.0	44.0	51.0	16.8	12.4
3/4"x1/2"	35.0	44.0	51.0	16.8	14.9
1"x1/8"	44.0	57.0	51.0	19.6	8.8
1x1/4"	44.0	57.0	60.0	19.6	11.4
1"x3/8"	44.0	57.0	60.0	19.6	12.4
1"x1/2"	44.0	57.0	60.0	19.6	14.9
1"x3/4"	44.0	57.0	60.0	19.6	16.8
1-1/4"x1/8"	57.0	64.0	67.0	21.9	8.8
1-1/4"x1/4"	57.0	64.0	67.0	21.9	11.4
1-1/4"x3/8"	57.0	64.0	67.0	21.9	12.4
1-1/4"x1/2"	57.0	64.0	67.0	21.9	14.9
1-1/4"x3/4"	57.0	64.0	67.0	21.9	16.8
1-1/4"x1"	57.0	64.0	67.0	21.9	19.6
1-1/2"x1/8"	64.0	76.0	79.0	22.7	8.8
1-1/2"x1/4"	64.0	76.0	79.0	22.7	11.4
1-1/2"x3/8"	64.0	76.0	79.0	22.7	12.4
1-1/2"x1/2"	64.0	76.0	79.0	22.7	14.9
1-1/2"x3/4"	64.0	76.0	79.0	22.7	16.8
1-1/2"x1"	64.0	76.0	79.0	22.7	19.6
1-1/2"x1-1/4"	64.0	76.0	79.0	22.7	21.9
2"x1/8"	76.0	92.0	86.0	23.9	8.8
2"x1/4"	76.0	92.0	86.0	23.9	11.4
2"x3/8"	76.0	92.0	86.0	23.9	12.4
2"x1/2"	76.0	92.0	86.0	23.9	14.9
2"x3/4"	76.0	92.0	86.0	23.9	16.8
2"x1"	76.0	92.0	86.0	23.9	19.6

Reducing Coupling Threaded



Nom. Pipe Size	D		W	L1	L2
	3000Lb	6000Lb			
2"x1-1/4"	76.0	92.0	86.0	23.9	21.9
2"x1-1/2"	76.0	92.0	86.0	23.9	22.7
2-1/2"x1/8"	92.0	108.0	92.0	30.5	8.8
2-1/2"x1/4"	92.0	108.0	92.0	30.5	11.4
2-1/2"x3/8"	92.0	108.0	92.0	30.5	12.4
2-1/2"x1/2"	92.0	108.0	92.0	30.5	14.9
2-1/2"x3/4"	92.0	108.0	92.0	30.5	16.8
2-1/2"x1"	92.0	108.0	92.0	30.5	19.6
2-1/2"x1-1/4"	92.0	108.0	92.0	30.5	21.9
2-1/2"x1-1/2"	92.0	108.0	92.0	30.5	22.7
2-1/2"x2"	92.0	108.0	92.0	30.5	23.9
3"x1/8"	108.0	127.0	108.0	32.8	8.8
3"x1/4"	108.0	127.0	108.0	32.8	11.4
3"x3/8"	108.0	127.0	108.0	32.8	12.4
3"x1/2"	108.0	127.0	108.0	32.8	14.9
3"x3/4"	108.0	127.0	108.0	32.8	16.8
3"x1"	108.0	127.0	108.0	32.8	19.6
3"x1-1/4"	108.0	127.0	108.0	32.8	21.9
3"x1-1/2"	108.0	127.0	108.0	32.8	22.7
3"x2"	108.0	127.0	108.0	32.8	23.9
3"x2-1/2"	108.0	127.0	108.0	32.8	30.5
4"x1/8"	140.0	159.0	121.0	34.6	8.8
4"x1/4"	140.0	159.0	121.0	34.6	11.4
4"x3/8"	140.0	159.0	121.0	34.6	12.4
4"x1/2"	140.0	159.0	121.0	34.6	14.9
4"x3/4"	140.0	159.0	121.0	34.6	16.8
4"x1"	140.0	159.0	121.0	34.6	19.6
4"x1-1/4"	140.0	159.0	121.0	34.6	21.9
4"x1-1/2"	140.0	159.0	121.0	34.6	22.7
4"x2"	140.0	159.0	121.0	34.6	23.9
4"x2-1/2"	140.0	159.0	121.0	34.6	30.5
4"x3"	140.0	159.0	121.0	34.6	32.8

(1) Dimensions in accordance with ASME B16.11-2011.