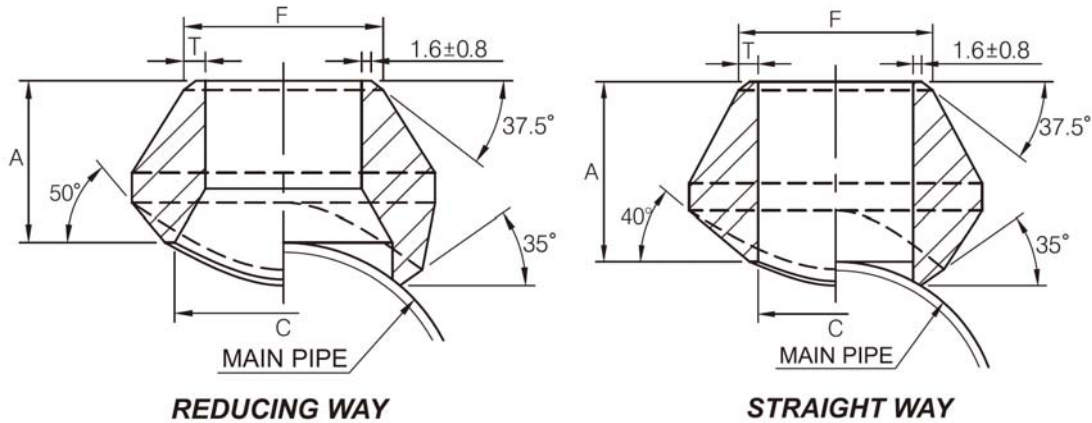


Butt Weld 90° Branch Outlet

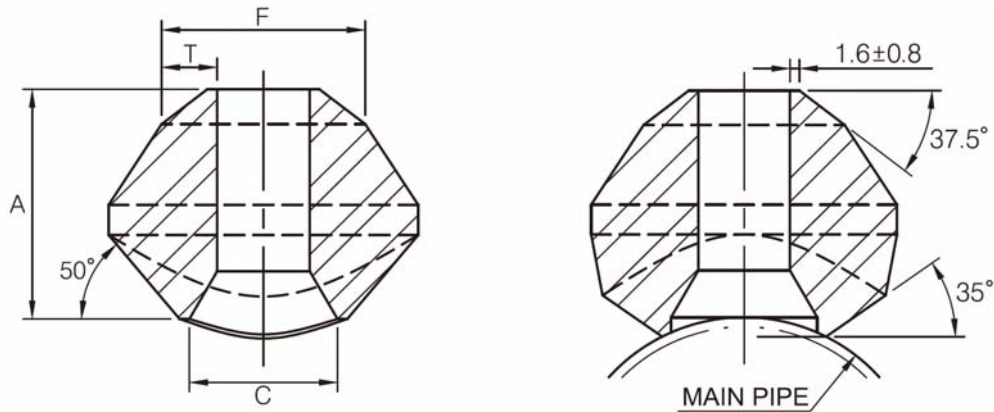


Standard Weight and Extra Strong

Outlet Pipe	Reducing Way					
	A		C	F	T	
	Standard	Extra Strong			Standard	Extra Strong
1/8"	15.7	15.7	13.7	10.3	1.73	2.41
1/4"	15.7	15.7	13.7	13.7	2.24	3.02
3/8"	19.1	19.1	17.1	17.1	2.31	3.20
1/2"	19.1	19.1	21.3	21.3	2.77	3.73
3/4"	22.4	22.4	26.7	26.7	2.87	3.91
1"	26.9	26.9	33.4	33.4	3.38	4.55
1-1/4"	31.8	31.8	42.2	42.2	3.56	4.85
1-1/2"	33.3	33.3	48.3	48.3	3.68	5.08
2"	38.1	38.1	60.3	60.3	3.91	5.54
2-1/2"	41.1	41.1	73.0	73.0	5.16	7.01
3"	44.4	44.4	88.9	88.9	5.49	7.62
3-1/2"	47.8	47.8	101.6	101.6	5.74	8.56
4"	50.8	50.8	114.3	114.3	6.02	8.56
5"	57.2	57.2	141.3	141.3	6.55	9.53
6"	60.4	77.7	168.3	168.3	7.11	10.97
8"	69.8	98.6	219.3	219.3	8.11	12.70
10"	77.7	93.7	273.1	273.1	9.27	12.70
12"	85.9	103.1	323.9	323.9	9.53	12.70
14"	88.9	100.1	355.6	355.6	9.53	12.70
16"	93.7	106.2	406.4	406.4	9.53	12.70
18"	96.8	111.2	457.2	457.2	9.53	12.70
20"	101.6	119.1	508.0	508.0	9.53	12.70
24"	115.8	139.7	609.6	609.6	9.53	12.70

Outlet Pipe	Straight Way				
	A	C	F	T	
				Standard	Extra Strong
1/8"	-	-	-	-	-
1/4"	15.7	11.5	13.7	2.24	3.02
3/8"	19.1	14.5	17.1	2.31	3.20
1/2"	19.1	16.5	21.3	2.77	3.73
3/4"	22.4	21.5	26.7	2.87	3.91
1"	26.9	27.2	33.4	3.38	4.55
1-1/4"	31.8	36.0	42.2	3.56	4.85
1-1/2"	33.3	42.0	48.3	3.68	5.08
2"	38.1	53.0	60.3	3.91	5.54
2-1/2"	41.1	65.0	73.0	5.16	7.01
3"	44.4	80.0	88.9	5.49	7.62
3-1/2"	-	-	-	-	-
4"	50.8	104.0	114.3	6.02	8.56

Butt Weld 90° Branch Outlet



Schedule 160 and Double Extra Strong

Outlet Pipe	A	C	F	T	
				SCH160	XXS
1/2"	28.4	13.8	21.3	4.78	7.47
3/4"	31.8	18.9	26.7	5.56	7.82
1"	38.1	24.3	33.4	6.35	9.09
1-1/4"	44.4	32.5	42.2	6.35	9.70
1-1/2"	50.8	38.1	48.3	7.14	10.15
2"	55.4	49.2	60.3	8.74	11.07
2-1/2"	62.0	59.0	73.0	9.53	14.02
3"	73.2	73.7	88.9	11.13	15.24
4"	84.1	97.2	114.3	13.49	17.12
5"	94.7	122.2	141.3	15.88	19.05
6"	104.6	146.4	168.3	18.26	21.95

Conventional Run Size Combinations

		OUTLET SIZE										
		1/4"	3/8"	1/2"	3/4"	1"	1-1/4"	1-1/2"	2"	2-1/2"	3"	4"
RUN SIZE (Main Pipe)	Reducing way	3/8"~3/4" 1"~36"	1/2" 3/4"~1-1/4" 1-1/2"~36"	3/4" 1" 1-1/4" 1-1/2"~3" 3-1/2"~36"	1" 1-1/4" 1-1/2" 2"~3" 3-1/2"~6" 8"~36"	1-1/4" 1-1/2" 2" 2-1/2" 3" 3-1/2"~4" 5"~10" 12~36"	1-1/2" 2" 2-1/2" 3" 3-1/2"~5" 6"~8" 10"~36"	2" 2-1/2" 3" 3-1/2" 4"~5" 6"~10" 12"~36"	2-1/2" 3" 3-1/2" 4" 5"~6" 8"~10" 12"~18" 20"~36"	3" 3-1/2" 4" 5" 6" 8" 10"~14" 16"~36"	3-1/2" 4" 5" 6" 8" 10" 12"~16" 18"~36"	5" 6" 8" 10" 12"~14" 16"~18" 20"~24" 26"~36"
	Straight way	3/8"~36"	1/2"~36"	3/4"~36"	1"~36"	1-1/4"~1-1/2" 2"~36"	1-1/2" 2"~3" 3-1/2"~36"	2" 2-1/2"~4" 5"~36"	2-1/2" 3"~3-1/2" 4"~6" 8"~36"	3" 3-1/2"~4" 5"~8" 10"~36"	3-1/2" 4" 5" 6" 8"~12" 14"~36"	5" 6" 8" 10" 12"~16" 18"~36"

- (1) Each charted outlet size is designed to fit a number of run pipe size.
- (2) Outlet size 4 and less for Standard and Extra Strong fit a number of run pipe sizes and the fitting are marked accordingly.
- (3) Outlet size 5 and up and Schedule 160 and Double Extra Strong order to specific size combination.
- (4) Weld Bevel in accordance with ASME B16.25.
- (5) Dimensions in accordance with MSS SP-97-2012.