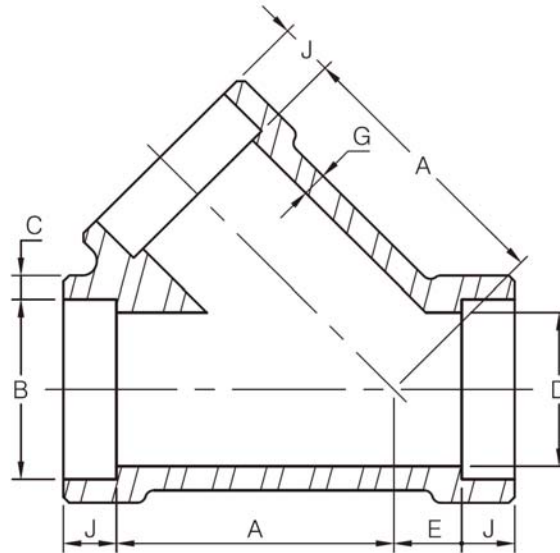


## 45° Lateral Tee Socket Weld



DN	Nom. Pipe Size	B	C <sup>(1)</sup>				D <sup>(1)</sup>		A		E		G <sup>(1)</sup> (Min)		J <sup>(1)</sup> (Min)
			3M		6M		3M	6M	3M	6M	3M	6M	3M	6M	
			Avg	Min	Avg	Min									
15	1/2"	21.8	4.67	5.97	4.09	5.18	15.8	11.8	35	41	9	9	3.75	4.78	9.5
20	3/4"	27.2	4.90	6.96	4.27	6.04	21.0	15.6	41	51	9	12	3.95	5.56	12.5
25	1"	33.9	5.69	7.92	4.98	6.93	26.7	20.7	51	59	12	17	4.55	6.35	12.5
32	1-1/4"	42.7	6.07	7.92	5.28	6.93	35.1	29.5	59	68	17	21	4.85	6.35	12.5
40	1-1/2"	48.8	6.35	8.92	5.54	7.80	40.9	34.0	68	95	21	24	5.10	7.14	12.5
50	2"	61.2	6.93	10.92	6.04	9.50	52.5	42.9	95	106	24	31	5.55	8.74	16.0
65	2-1/2"	73.9	8.76	-	7.67	-	62.7	-	118	-	38	-	7.05	-	16.0

(1) Dimensions refer to ASME B16.11 for class 3M, socket weld fittings.