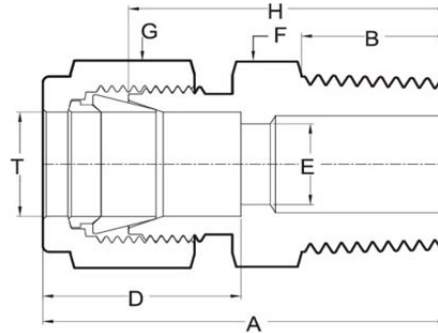


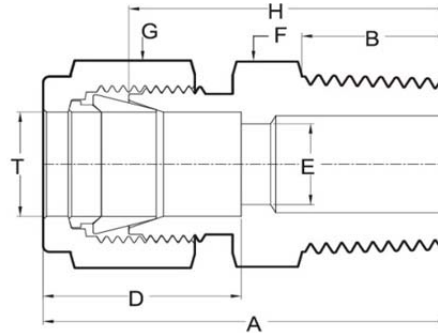
## MC Male Connector



### Metric

TUBE O.D.	MALE PIPE SIZE	ITEM NUMBER	A	B	D	E	F	G	H
3	1/8	MC-3-1	31.7	10.0	12.9	2.5	12	7/16	25.0
3	1/4	MC-3-2	34.7	13.0	12.9	2.5	14	7/16	28.0
4	1/8	MC-4-1	32.1	10.0	13.7	2.5	12	12	25.0
4	1/4	MC-4-2	35.1	13.0	13.7	2.5	14	12	28.0
4	3/8	MC-4-3	37.1	14.0	13.7	2.5	17	12	30.0
4	1/2	MC-4-4	41.1	17.0	13.7	2.5	22	12	34.0
4	3/4	MC-4-6	44.1	19.0	13.7	2.5	27	9/16	37.0
4	1	MC-4-8	50.1	22.0	13.7	2.5	35	9/16	43.0
6	1/8	MC-6-1	33.6	10.0	15.3	5.0	12	9/16	26.0
6	1/4	MC-6-2	36.6	13.0	15.3	5.0	14	9/16	29.0
6	3/8	MC-6-3	38.6	14.0	15.3	5.0	17	9/16	31.0
6	1/2	MC-6-4	42.6	17.0	15.3	5.0	22	9/16	35.0
6	3/4	MC-6-6	45.6	19.0	15.3	5.0	27	9/16	38.0
6	1	MC-6-8	51.6	22.0	15.3	5.0	35	9/16	44.0
8	1/8	MC-8-1	34.8	10.0	16.2	5.0	14	5/8	27.0
8	1/4	MC-8-2	37.8	13.0	16.2	6.0	14	5/8	30.0
8	3/8	MC-8-3	39.8	14.0	16.2	6.0	17	5/8	32.0
8	1/2	MC-8-4	43.8	17.0	16.2	6.0	22	5/8	36.0
8	3/4	MC-8-6	46.8	19.0	16.2	6.0	27	5/8	39.0
8	1	MC-8-8	52.8	22.0	16.2	6.0	35	5/8	45.0
10	1/8	MC-10-1	36.9	10.0	17.2	5.0	17	19	29.0
10	1/4	MC-10-2	39.9	13.0	17.2	7.0	17	19	32.0
10	3/8	MC-10-3	40.9	14.0	17.2	8.0	17	19	33.0
10	1/2	MC-10-4	44.9	17.0	17.2	8.0	22	19	37.0
10	3/4	MC-10-6	47.9	19.0	17.2	8.0	27	19	40.0
10	1	MC-10-8	53.9	22.0	17.2	8.0	35	19	46.0
12	1/8	MC-12-1	39.7	10.0	22.8	5.0	19	7/8	30.0
12	1/4	MC-12-2	42.7	13.0	22.8	7.0	19	7/8	33.0
12	3/8	MC-12-3	43.7	14.0	22.8	10.0	19	7/8	34.0
12	1/2	MC-12-4	46.7	17.0	22.8	10.0	22	7/8	37.0
12	3/4	MC-12-6	49.7	19.0	22.8	10.0	27	7/8	40.0
12	1	MC-12-8	55.7	22.0	22.8	10.0	35	7/8	46.0
14	1/8	MC-14-1	40.4	10.0	24.4	5.0	24	25	30.0
14	1/4	MC-14-2	43.4	13.0	24.4	7.0	24	25	33.0
14	3/8	MC-14-3	44.4	14.0	24.4	9.5	24	25	34.0
14	1/2	MC-14-4	47.4	17.0	24.4	12.0	24	25	37.0
14	3/4	MC-14-6	50.4	19.0	24.4	12.0	27	25	40.0
14	1	MC-14-8	56.4	22.0	24.4	12.0	35	25	46.0

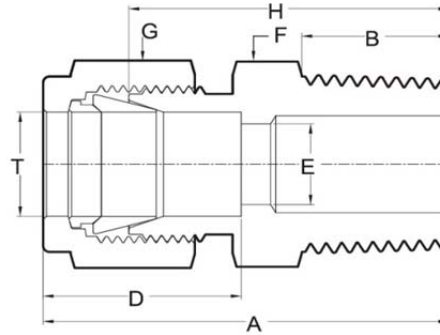
## MC Male Connector



### Metric

TUBE O.D.	MALE PIPE SIZE	ITEM NUMBER	A	B	D	E	F	G	H
15	1/8	MC-15-1	40.5	10.0	24.4	5.0	24	25	30.0
15	1/4	MC-15-2	43.5	13.0	24.4	7.0	24	25	33.0
15	3/8	MC-15-3	44.5	14.0	24.4	9.5	24	25	34.0
15	1/2	MC-15-4	47.5	17.0	24.4	12.0	24	25	37.0
15	3/4	MC-15-6	50.5	19.0	24.4	12.0	27	25	40.0
15	1	MC-15-8	56.5	22.0	24.4	12.0	35	25	46.0
16	1/8	MC-16-1	40.7	10.0	24.4	5.0	24	25	30.0
16	1/4	MC-16-2	43.7	13.0	24.4	7.0	24	25	33.0
16	3/8	MC-16-3	44.7	14.0	24.4	9.5	24	25	34.0
16	1/2	MC-16-4	47.7	17.0	24.4	12.0	24	25	37.0
16	3/4	MC-16-6	50.7	19.0	24.4	14.0	27	25	40.0
16	1	MC-16-8	56.7	22.0	24.4	14.0	35	25	46.0
18	1/8	MC-18-1	41.4	10.0	24.4	5.0	27	30	31.0
18	1/4	MC-18-2	44.4	13.0	24.4	7.0	27	30	34.0
18	3/8	MC-18-3	45.4	14.0	24.4	9.5	27	30	35.0
18	1/2	MC-18-4	48.4	17.0	24.4	12.0	27	30	38.0
18	3/4	MC-18-6	50.4	19.0	24.4	15.0	27	30	40.0
18	1	MC-18-8	56.4	22.0	24.4	16.0	35	30	46.0
20	1/8	MC-20-1	41.0	10.0	26.0	5.0	30	32	32.0
20	1/4	MC-20-2	44.0	13.0	26.0	7.0	30	32	35.0
20	3/8	MC-20-3	45.0	14.0	26.0	9.5	30	32	36.0
20	1/2	MC-20-4	48.0	17.0	26.0	12.0	30	32	39.0
20	3/4	MC-20-6	50.0	19.0	26.0	15.0	30	32	41.0
20	1	MC-20-8	55.0	22.0	26.0	18.0	35	32	46.0
22	1/8	MC-22-1	41.3	10.0	26.0	5.0	30	32	32.0
22	1/4	MC-22-2	44.3	13.0	26.0	7.0	30	32	35.0
22	3/8	MC-22-3	45.3	14.0	26.0	9.5	30	32	36.0
22	1/2	MC-22-4	48.3	17.0	26.0	12.0	30	32	39.0
22	3/4	MC-22-6	50.3	19.0	26.0	15.0	30	32	41.0
22	1	MC-22-8	55.3	22.0	26.0	18.0	35	32	46.0
25	1/8	MC-25-1	48.4	10.0	31.3	5.0	35	1-1/2	36.0
25	1/4	MC-25-2	51.4	13.0	31.3	7.0	35	1-1/2	39.0
25	3/8	MC-25-3	52.4	14.0	31.3	9.5	35	1-1/2	40.0
25	1/2	MC-25-4	55.4	17.0	31.3	12.0	35	1-1/2	43.0
25	3/4	MC-25-6	57.4	19.0	31.3	15.0	35	1-1/2	45.0
25	1	MC-25-8	60.4	22.0	31.3	20.0	35	1-1/2	48.0

## MC Male Connector



### Fractional

TUBE O.D.	MALE PIPE SIZE	ITEM NUMBER	A	B	D	E	F	G	H
1/16	1/8	MC-005-1	27.0	10.0	8.6	1.5	10	10	23.0
1/16	1/4	MC-005-2	30.0	13.0	8.6	1.5	14	10	26.0
1/8	1/8	MC-01-1	31.9	10.0	12.7	2.5	10	7/16	25.0
1/8	1/4	MC-01-2	34.9	13.0	12.7	2.5	14	7/16	28.0
1/8	3/8	MC-01-3	36.9	14.0	12.7	2.5	17	7/16	30.0
1/8	1/2	MC-01-4	40.9	17.0	12.7	2.5	22	7/16	34.0
1/8	3/4	MC-01-6	43.9	19.0	12.7	2.5	27	7/16	37.0
1/8	1	MC-01-8	49.9	22.0	12.7	2.5	35	7/16	43.0
3/16	1/8	MC-015-1	31.9	10.0	13.7	2.5	12	12	25.0
3/16	1/4	MC-015-2	34.9	13.0	13.7	2.5	14	12	28.0
1/4	1/8	MC-02-1	33.8	10.0	15.2	5.0	12	9/16	26.0
1/4	1/4	MC-02-2	36.8	13.0	15.2	5.0	14	9/16	29.0
1/4	3/8	MC-02-3	38.8	14.0	15.2	5.0	17	9/16	31.0
1/4	1/2	MC-02-4	42.8	17.0	15.2	5.0	22	9/16	35.0
1/4	3/4	MC-02-6	45.8	19.0	15.2	5.0	27	9/16	38.0
1/4	1	MC-02-8	51.8	22.0	15.2	5.0	35	9/16	44.0
3/8	1/8	MC-03-1	35.7	10.0	16.8	5.0	14	11/16	28.0
3/8	1/4	MC-03-2	38.7	13.0	16.8	7.7	14	11/16	31.0
3/8	3/8	MC-03-3	40.7	14.0	16.8	7.7	17	11/16	33.0
3/8	1/2	MC-03-4	44.7	17.0	16.8	7.7	22	11/16	37.0
3/8	3/4	MC-03-6	47.7	19.0	16.8	7.7	27	11/16	40.0
3/8	1	MC-03-8	53.7	22.0	16.8	7.7	35	11/16	46.0
1/2	1/8	MC-04-1	39.9	10.0	22.9	5.0	19	7/8	30.0
1/2	1/4	MC-04-2	42.9	13.0	22.9	7.0	19	7/8	33.0
1/2	3/8	MC-04-3	43.9	14.0	22.9	10.0	19	7/8	34.0
1/2	1/2	MC-04-4	46.9	17.0	22.9	10.0	22	7/8	37.0
1/2	3/4	MC-04-6	49.9	19.0	22.9	10.0	27	7/8	40.0
1/2	1	MC-04-8	55.9	22.0	22.9	10.0	35	7/8	46.0
5/8	3/8	MC-05-3	44.4	14.0	24.4	10.0	24	25	34.0
5/8	1/2	MC-05-4	48.4	17.0	24.4	12.0	24	25	38.0
5/8	3/4	MC-05-6	50.4	19.0	24.4	14.0	27	25	40.0
3/4	1/8	MC-06-1	41.9	10.0	24.4	5.0	27	1-1/8	31.0
3/4	1/4	MC-06-2	44.9	13.0	24.4	7.0	27	1-1/8	34.0
3/4	3/8	MC-06-3	45.9	14.0	24.4	9.5	27	1-1/8	35.0
3/4	1/2	MC-06-4	48.9	17.0	24.4	12.0	27	1-1/8	38.0
3/4	3/4	MC-06-6	50.9	19.0	24.4	15.0	27	1-1/8	40.0
3/4	1	MC-06-8	56.9	22.0	24.4	16.0	35	1-1/8	46.0
1	1/8	MC-08-1	48.4	10.0	31.2	5.0	35	1-1/2	36.0
1	1/4	MC-08-2	51.4	13.0	31.2	7.0	35	1-1/2	39.0
1	3/8	MC-08-3	52.4	14.0	31.2	9.5	35	1-1/2	40.0
1	1/2	MC-08-4	55.4	17.0	31.2	12.0	35	1-1/2	43.0
1	3/4	MC-08-6	57.4	19.0	31.2	16.0	35	1-1/2	45.0
1	1	MC-08-8	60.4	22.0	31.2	20.0	35	1-1/2	48.0