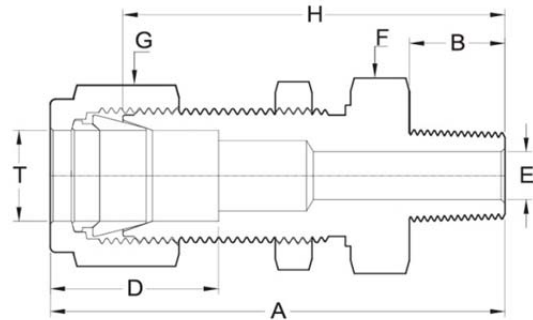


## BMC Bulkhead Male Connector



### Metric

TUBE O.D.	MALE PIPE SIZE	ITEM NUMBER	A	B	D	E	F	G	H	PANEL HOLE SIZE	MAX PANEL THICK
6	1/8	BMC-6-1	50.6	10.0	15.3	5.0	17	9/16	43.0	12.5	12
6	1/4	BMC-6-2	53.6	13.0	15.3	5.0	17	9/16	46.0	12.5	12
6	3/8	BMC-6-3	55.6	14.0	15.3	5.0	22	9/16	48.0	12.5	12
6	1/2	BMC-6-4	58.6	17.0	15.3	5.0	24	9/16	51.0	12.5	12
8	1/8	BMC-8-1	52.8	10.0	16.2	6.0	19	5/8	45.0	13.5	12
8	1/4	BMC-8-2	55.8	13.0	16.2	6.0	19	5/8	48.0	13.5	12
8	3/8	BMC-8-3	57.8	14.0	16.2	6.0	22	5/8	50.0	13.5	12
8	1/2	BMC-8-4	60.8	17.0	16.2	6.0	24	5/8	53.0	13.5	12
10	1/4	BMC-10-2	57.9	13.0	17.2	8.0	19	19	50.0	16.5	12
10	3/8	BMC-10-3	58.9	14.0	17.2	8.0	22	19	51.0	16.5	12
10	1/2	BMC-10-4	61.9	17.0	17.2	8.0	24	19	54.0	16.5	12
12	1/4	BMC-12-2	61.7	13.0	22.8	7.7	24	7/8	52.0	20.5	14
12	3/8	BMC-12-3	62.7	14.0	22.8	10.0	24	7/8	53.0	20.5	14
12	1/2	BMC-12-4	65.7	17.0	22.8	10.0	24	7/8	56.0	20.5	14

### Fractional

TUBE O.D.	MALE PIPE SIZE	ITEM NUMBER	A	B	D	E	F	G	H	PANEL HOLE SIZE	MAX PANEL THICK
1/4	1/8	BMC-02-1	50.8	10.0	15.2	5.0	17	9/16	43.0	12.5	12
1/4	1/4	BMC-02-2	53.8	13.0	15.2	5.0	17	9/16	46.0	12.5	12
1/4	3/8	BMC-02-3	54.8	14.0	15.2	5.0	17	9/16	47.0	12.5	12
1/4	1/2	BMC-02-4	58.8	17.0	15.2	5.0	22	9/16	51.0	12.5	12
3/8	1/8	BMC-03-1	54.7	10.0	16.8	5.0	19	11/16	47.0	15.5	12
3/8	1/4	BMC-03-2	57.7	13.0	16.8	7.0	19	11/16	50.0	15.5	12
3/8	3/8	BMC-03-3	58.7	14.0	16.8	7.0	19	11/16	51.0	15.5	12
3/8	1/2	BMC-03-4	61.7	17.0	16.8	7.0	22	11/16	54.0	15.5	12
1/2	1/4	BMC-04-2	61.9	13.0	22.9	7.7	24	7/8	52.0	20.5	14
1/2	3/8	BMC-04-3	62.9	14.0	22.9	10.0	24	7/8	53.0	20.5	14
1/2	1/2	BMC-04-4	65.9	17.0	22.9	10.0	24	7/8	56.0	20.5	14