

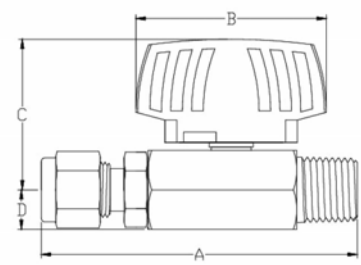
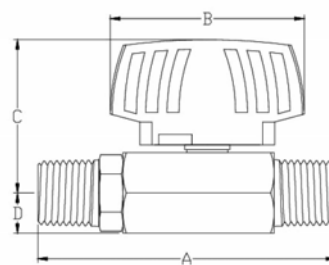
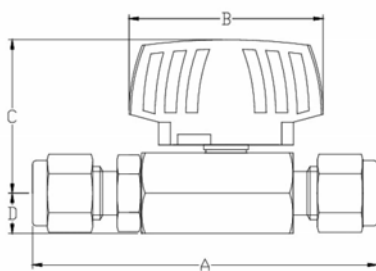
## 2BV 2 Piece Ball Valve 1000PSI

### Features

1. Black handle with arrow indicates flow direction.
2. Max. allowed working pressure: 1000psi (69 bar).
3. End connections available with Tube end, NPT or BSPT Male thread.
4. With Viton O-ring.
5. 100% factory tested.

### Material List

Item	Part Name	Q'ty	Material
1	Handle	1	Nylon
2	Locking Nut	1	SS304
3	Spring Washer	1	SS304
4	Washer	2	SS304
5	Gland Packing	2	PTFE
6	Stem	1	SS316
7	Body	1	SS316
8	Ball	1	SS316
9	Seat	2	PTFE
10	Body O-ring	1	Viton
11	End Cap	1	SS316



Type	Item No.	Conn./Size	Orifice		Dimensions (mm)			
		Inlet/Outlet	mm	in.	A	B	C	D
Tube end	2BV-6OD	6mm	5.0	0.19	72.6	41.0	31.4	8.5
	2BV-8OD	8mm	5.0	0.19	74.5	41.0	31.4	8.5
	2BV-10OD	10mm	7.0	0.27	78.5	41.0	33.1	9.5
	2BV-12OD	12mm	9.0	0.35	90.1	50.0	41.3	13.5
	2BV-18OD	18mm	12.5	0.49	108.9	58.5	48.5	16.0
	2BV-02OD	1/4"	5.0	0.19	72.9	41.0	31.4	8.5
	2BV-03OD	3/8"	7.0	0.27	78.2	41.0	33.1	9.5
	2BV-04OD	1/2"	9.0	0.35	90.5	50.0	41.3	13.5
Male thread	2BV-02M	1/4"	5.0	0.19	60.2	41.0	31.4	8.5
Tube end x Male thread	2BV-02ODxM	1/4"	5.0	0.19	65.0	41.0	31.4	8.5