

VACUUM FITTINGS

WELLGROW INDUSTRIES CORP.

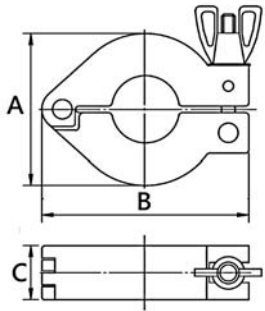


- ▲ **KF Flanges & Components**
- ▲ **ISO Flanges & Components**
- ▲ **CF Flanges & Components**
- ▲ **Vacuum Valves**
- ▲ **Weld Fittings**

KF Flanges & Components

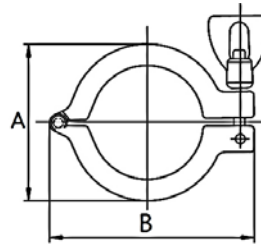
Dimension (mm)

KF Aluminum Single Pin Clamp



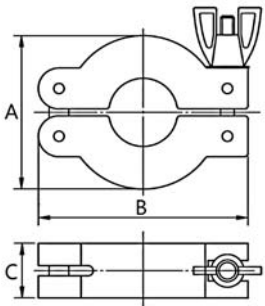
Model No.	Material	A	B	C
CP-16	ADC12	41.0	63.0	17.5
CP-25	ADC12	52.5	72.0	17.5
CP-40	ADC12	70.0	90.0	17.5
CP-50	ADC12	89.0	113.5	20.0

KF 304 Single Pin Clamp



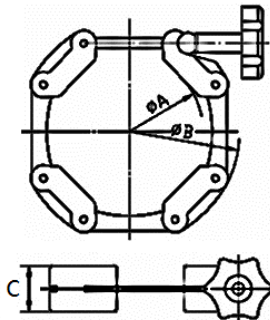
Model No.	A	B
SCP-4-16	42.5	63
SCP-4-25	54.0	72
SCP-4-40	70.0	90
SCP-4-50	90.0	114

KF Aluminum Double Pin Clamp



Model No.	Material	A	B	C
CPP-16	ADC12	42.0	62.0	16.5
CPP-25	ADC12	53.5	72.0	16.5
CPP-40	ADC12	69.0	89.5	16.5
CPP-50	ADC12	90.0	113.0	20.0

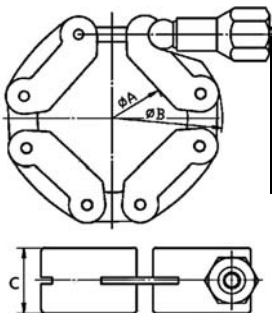
KF Aluminum Chain Clamp, Knob:ABS



Model No.	Material	A	B	C
CCP-16	ADC12	22	56	20.5
CCP-25	ADC12	32	66	20.5
CCP-40	ADC12	46	80	20.5
CCP-50	ADC12	69	100	20.5
CCP-63	ADC12	78	112	20.5

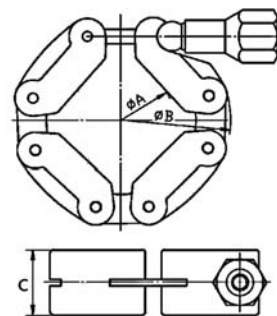
KF Aluminum Chain Clamp, Nut:Steel+Zn

Plated



Model No.	Material	A	B	C
CCP-16N	ADC12	22	56	20.5
CCP-25N	ADC12	32	66	20.5
CCP-40N	ADC12	46	80	20.5
CCP-50N	ADC12	69	100	20.5
CCP-63N	ADC12	78	112	20.5

KF 304 Chain Clamp, Nut:304

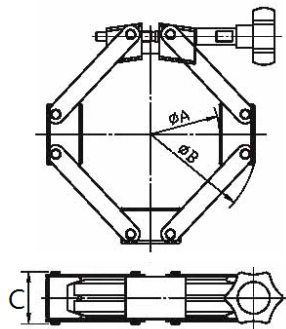


Model No.	A	B	C
CCP-4-16	22	56	20.5
CCP-4-25	32	66	20.5
CCP-4-40	46	80	20.5
CCP-4-50	69	100	20.5
CCP-4-63	78	112	20.5

KF Flanges & Components

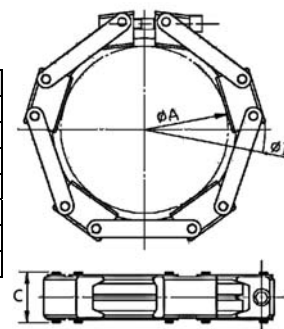
Dimension (mm)

**Aluminum Chain Clamp, Knob:Nylon Fiber, Body:
A6061T6-Hard Anodizing**



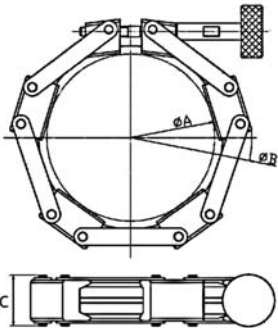
Model No.	A	B	C
CCP-80	100.0	165.0	38
CCP-100	122.0	185.0	38
CCP-125	162.0	205.0	38
CCP-160	174.0	235.0	38
	178.5	231.5	38
CCP-200	240.0	293.0	38
CCP-250	289.0	301.0	38

**Aluminum Chain Clamp, Bolt:SUS304, Body:
A6061T6-Hard Anodizing**



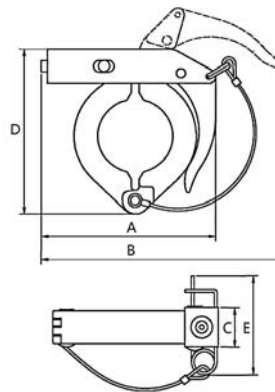
Model No.	A	B	C
CCPB-80	100.0	165.0	38
CCPB-100	122.0	185.0	38
CCPB-125	162.0	205.0	38
CCPB-160	174.0	235.0	38
	178.5	231.5	38
CCPB-200	240.0	293.0	38
CCPB-250	289.0	301.0	38

**Aluminum Chain Clamp, Knob:SUS304, Body:
A6061T6-Green Anodizing**



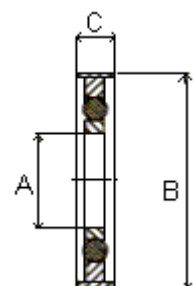
Model No.	A	B	C
CCPG-80	100.0	165.0	38
CCPG-100	122.0	185.0	38
CCPG-125	162.0	205.0	38
CCPG-160	174.0	235.0	38
	178.5	231.5	38
CCPG-200	240.0	293.0	38
CCPG-250	289.0	301.0	38

**KF Aluminum Toggle Clamp with Lanyard, Body &
Bar: ADC12, Lock Case &Pin: SUS304, Spring:
SWC+Electro Deposition**



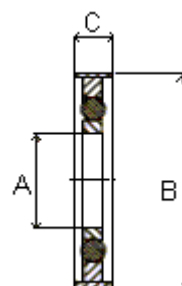
Model No.	A	B	C	D	E
TC-16	69	97	20	63	43
TC-25	75	106	20	74	43
TC-40	85	123	20	90	43
TC-50	118	165	23	115	43

**KF Aluminum Outer Ring, 304 Centering Ring,
Viton O'ring**



Model No.	A	B	C	O'ring
OCRV-AL16	16	32.5	8	5018
OCRV-AL25	25	42.5	8	5028
OCRV-AL40	40	57.5	8	5042
OCRV-AL50	50	77.5	8	AS-330

**KF 304 Outer Ring, 304 Centering Ring, Viton
O'ring**

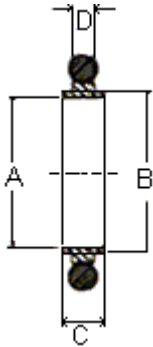


Model No.	A	B	C	O'ring
OCRV-16	16	32.5	8	5018
OCRV-25	25	42.5	8	5028
OCRV-40	40	57.5	8	5042
OCRV-50	50	77.5	8	AS-330

KF Flanges & Components

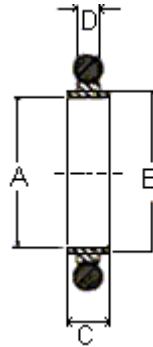
Dimension (mm)

KF Aluminum Centering Ring, Viton O'ring



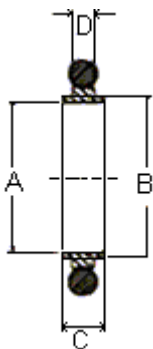
Model No.	A	B	C	D	O'ring (AS-568)
CRV-AL10	10	12	8	3.9	AS-311
CRV-AL16	16	17	8	3.9	AS-314
CRV-AL25	25	26	8	3.9	AS-320
CRV-AL40	40	41	8	3.9	AS-326
CRV-AL50	50	52	8	3.9	AS-330

KF 304 Centering Ring, Viton O'ring



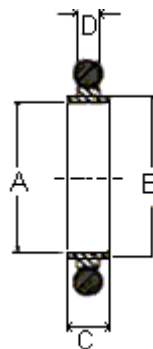
Model No.	A	B	C	D	O'ring (AS-568)
CRV-10	10	12	8	3.9	AS-311
CRV-16	16	17	8	3.9	AS-314
CRV-25	25	26	8	3.9	AS-320
CRV-40	40	41	8	3.9	AS-326
CRV-50	50	52	8	3.9	AS-330

KF Aluminum Centering Ring, NBR O'ring



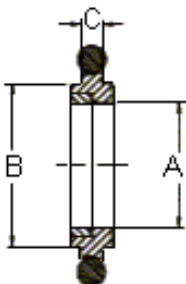
Model No.	A	B	C	D	O'ring (AS-568)
CRN-AL10	10	12	8	3.9	AS-311
CRN-AL16	16	17	8	3.9	AS-314
CRN-AL25	25	26	8	3.9	AS-320
CRN-AL40	40	41	8	3.9	AS-326
CRN-AL50	50	52	8	3.9	AS-330

KF 304 Centering Ring, NBR O'ring



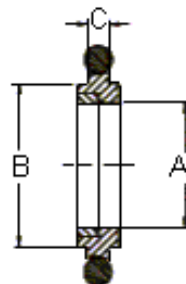
Model No.	A	B	C	D	O'ring (AS-568)
CRN-10	10	12	8	3.9	AS-311
CRN-16	16	17	8	3.9	AS-314
CRN-25	25	26	8	3.9	AS-320
CRN-40	40	41	8	3.9	AS-326
CRN-50	50	52	8	3.9	AS-330

KF Mesh Centering Rings, Viton O'ring – USA



Model No.	A	B	C	O'ring (AS-568)
MCRVA-16	9.5	17.0	3.9	AS-314
MCRVA-25	19.5	26.0	3.9	AS-320
MCRVA-40	32.0	41.0	3.9	AS-326
MCRVA-50	43.0	52.0	3.9	AS-330
MCRVA-63	60.6	69.6	3.9	AS-336
MCRVA-80	73.6	82.6	3.9	AS-340
MCRVA-100	89.6	101.6	3.9	AS-346
MCRVA-160	140.6	152.6	3.9	AS-361

KF Mesh Centering Rings, Viton O'ring – Europe

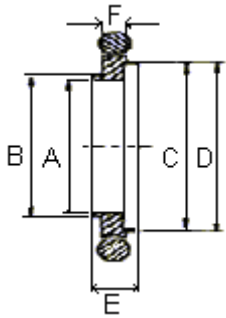


Model No.	A	B	C	O'ring (AS-568)
MCRVE-16	9.5	17	3.9	AS-314
MCRVE-25	19.5	26	3.9	AS-320
MCRVE-40	32.0	41	3.9	AS-326
MCRVE-50	43.0	52	3.9	AS-330
MCRVE-63	61.0	70	3.9	AS-336
MCRVE-80	74.0	83	3.9	AS-340
MCRVE-100	90.0	102	3.9	AS-346
MCRVE-160	141.0	153	3.9	AS-361

KF Flanges & Components

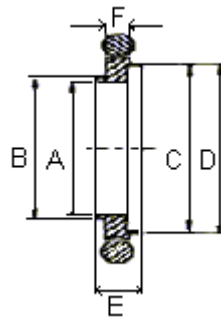
Dimension (mm)

KF Aluminum Centering Ring Adapter, Viton O'ring



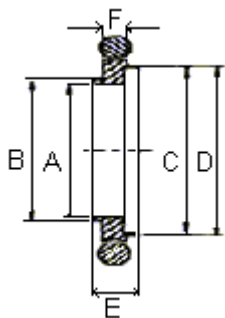
Model No.	A	B	C	D	E	F	O'ring (AS-568)
CAV-AL16	10	12	16	17	8	3.9	AS-314
CAV-AL25	20	22	25	26	8	3.9	AS-320
CAV-AL40	32	34	40	41	8	3.9	AS-326
CAV-AL50	40	41	50	52	8	3.9	AS-330

KF 304 Centering Ring Adapter, Viton O'ring



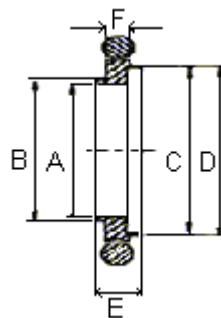
Model No.	A	B	C	D	E	F	O'ring (AS-568)
CAV-16	10	12	16	17	8	3.9	AS-314
CAV-25	20	22	25	26	8	3.9	AS-320
CAV-40	32	34	40	41	8	3.9	AS-326
CAV-50	40	41	50	52	8	3.9	AS-330

KF Aluminum Centering Ring Adapter, NBR O'ring



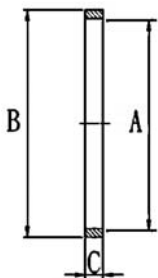
Model No.	A	B	C	D	E	F	O'ring (AS-568)
CAN-AL16	10	12	16	17	8	3.9	AS-314
CAN-AL25	20	22	25	26	8	3.9	AS-320
CAN-AL40	32	34	40	41	8	3.9	AS-326
CAN-AL50	40	41	50	52	8	3.9	AS-330

KF 304 Centering Ring Adapter, NBR O'ring



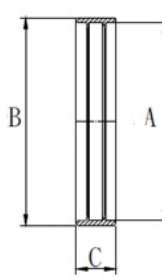
Model No.	A	B	C	D	E	F	O'ring (AS-568)
CAN-16	10	12	16	17	8	3.9	AS-314
CAN-25	20	22	25	26	8	3.9	AS-320
CAN-40	32	34	40	41	8	3.9	AS-326
CAN-50	40	41	50	52	8	3.9	AS-330

KF Overpressure Ring



Model No.	A	B	C
OR-10	23.50	28.00	3.7
OR-16	30.12	31.75	3.7
OR-25	38.86	40.40	3.7
OR-40	54.00	57.15	3.7
OR-50	66.55	69.85	3.7

KF Outer Ring

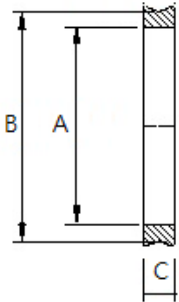


Model No.	A	B	C
OTR-16	30.5	32.5	8
OTR-25	40.5	42.5	8
OTR-40	55.5	57.5	8
OTR-50	75.5	77.5	8

KF Flanges & Components

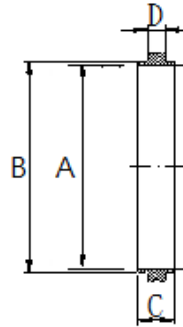
Dimension (mm)

KF Inner Ring



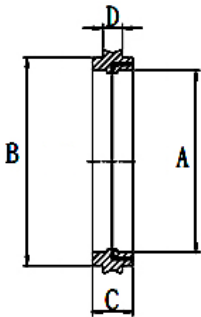
Model No.	A	B	C
IR-16	16	19	3.9
IR-25	25	29	3.9
IR-40	40	43	3.9
IR-50	50	55	3.9

KF Centering Ring



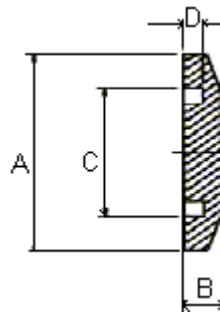
Model No.	A	B	C	D
CR-10	10	12	8	3.9
CR-16	16	17	8	3.9
CR-25	25	26	8	3.9
CR-40	40	41	8	3.9
CR-50	50	52	8	3.9

KF Mesh Centering Ring



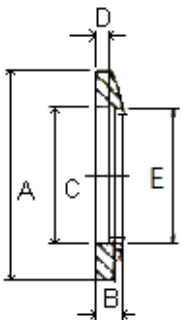
Model No.	A	B	C	D
MCR-16	12.0	17	8	3.9
MCR-25	20.5	26	8	3.9
MCR-40	35.8	41	8	3.9
MCR-50	46.3	52	8	3.9

KF Blank Flange



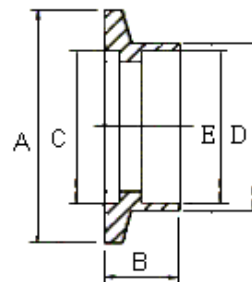
Model No.	A	B	C	D
BL-10	30	5.1	12.2	2.5
BL-16	30	5.1	17.2	2.5
BL-25	40	5.1	26.2	2.5
BL-40	55	5.1	41.2	2.5
BL-50	75	5.1	52.2	2.5
BL-63	87	11.0	70.0	2.5
BL-80	114	11.0	83.0	2.5
BL-100	134	11.0	102.0	2.5
BL-160	190	11.0	153.0	2.5

KF Bored Flange



Model No.	A	B	C	D	E
BF-10	30	5.1	12.2	2.5	12.9
BF-16	30	5.1	17.2	2.5	19.3
BF-25	40	5.1	26.2	2.5	25.7
BF-40	55	5.1	41.2	2.5	38.4
BF-50	75	5.1	52.2	2.5	51.0
BF-63	87	11.0	70.0	2.5	63.7
BF-80	114	11.0	83.0	2.5	76.4
BF-100	134	11.0	102.0	2.5	101.8
BF-160	190	11.0	153.0	2.5	152.9

KF Socket Weld Flange

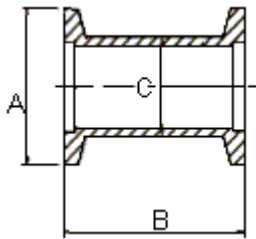


Model No.	A	B	C	D	E
SWF-10	30	12.7	12.2	16.5	13.0
SWF-16	30	12.7	17.1	22.1	19.3
SWF-25	40	12.7	26.2	29.0	25.7
SWF-40	55	12.7	41.3	44.5	38.4
SWF-50	75	12.7	52.3	57.2	51.1
SWF-63	87	12.7	70.0	67.5	63.7

KF Flanges & Components

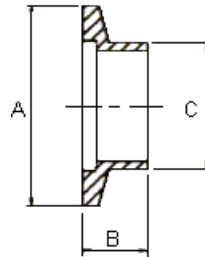
Dimension (mm)

KF Nipple



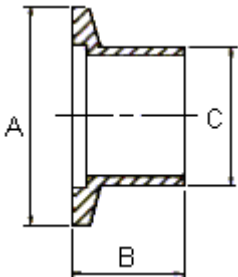
Model No.	A	B	C
NI-16	30	80	19.05
NI-25	40	100	25.40
NI-40	55	130	38.10
NI-50	75	140	50.80

KF Half Nipple Short - USA



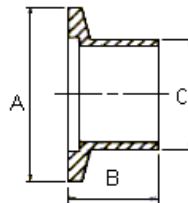
Model No.	A	B	C
SWFA-10	30	12.7	12.70
SWFA-16	30	12.7	19.05
SWFA-25	40	12.7	26.40
SWFA-40	55	19.1	38.10
SWFA-50	75	19.1	50.80

KF Half Nipples Short – Europe

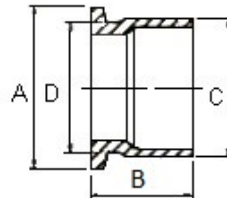


Model No.	A	B	C
SWFE-10	30	20	14
SWFE-16	30	20	20
SWFE-25	40	20	28
SWFE-40	55	20	45
SWFE-50	75	20	57

KF Half Nipples Short – Japan

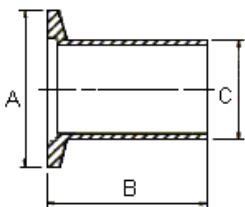


Model No.	A	B	C
SWFJ-25-27	40	20	27.2
SWFJ-40-42	55	20	42.7
SWFJ-50-60	75	20	60.5



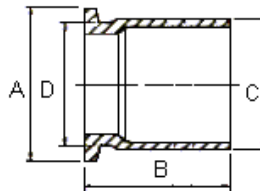
Model No.	A	B	C	D
SWFJ-25-34	40	20	34.0	32
SWFJ-40-48	55	20	48.6	45

KF Half Nipples Long – USA

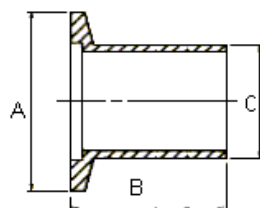


Model No.	A	B	C
LWFA-10	30	40	12.70
LWFA-16	30	40	19.05
LWFA-25	40	40	25.40
LWFA-40	55	40	38.10
LWFA-50	75	40	50.80

KF Half Nipples Long – Japan



Model No.	A	B	C	D
LWFJ-25	40	50	34.0	32
LWFJ-40	55	50	48.6	45

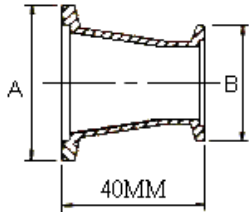


Model No.	A	B	C
LWFJ-50	75	50	60.5

KF Flanges & Components

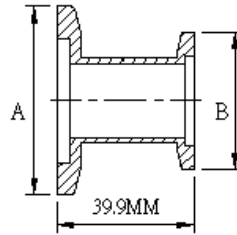
Dimension (mm)

KF Conical Reducing Adaptors



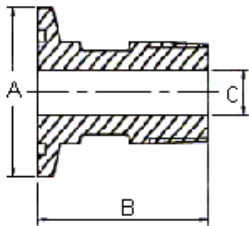
Model No.	A	B
RA16-25	40	30
RA16-40	55	30
RA25-40	55	40
RA16-50	75	30
RA25-50	75	40
RA40-50	75	55

KF Straight Reducers



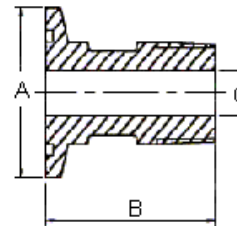
Model No.	A	B
SR16-25	KF25	KF16
SR16-40	KF40	KF16
SR25-40	KF40	KF25
SR16-50	KF50	KF16
SR25-50	KF50	KF25
SR40-50	KF50	KF40

KF Male PT Adaptor



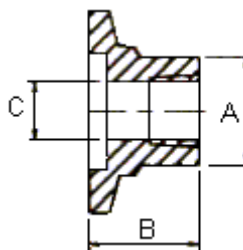
Model No.	A	B	C	PT
MA16-PT1/8	30	35	4.7	1/8"
MA16-PT1/4	30	35	7.1	1/4"
MA25-PT1/8	40	35	4.7	1/8"
MA25-PT1/4	40	35	7.1	1/4"
MA25-PT1/2	40	40	11.9	1/2"
MA25-PT3/4	40	40	15.9	3/4"
MA40-PT1/4	55	35	7.1	1/4"
MA40-PT1/2	55	40	11.9	1/2"
MA40-PT3/4	55	40	15.9	3/4"
MA40-PT1	55	45	22.2	1"
MA50-PT1/4	75	35	7.1	1/4"
MA50-PT1/2	75	40	11.9	1/2"
MA50-PT3/4	75	40	15.9	3/4"
MA50-PT1	75	45	22.2	1"

KF Male NPT Adaptor



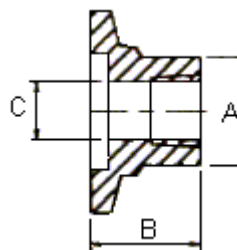
Model No.	A	B	C	NPT
MA16-NPT1/8	30	35	4.7	1/8"
MA16-NPT1/4	30	35	7.1	1/4"
MA25-NPT1/8	40	35	4.7	1/8"
MA25-NPT1/4	40	35	7.1	1/4"
MA25-NPT1/2	40	40	11.9	1/2"
MA25-NPT3/4	40	40	15.9	3/4"
MA40-NPT1/4	55	35	7.1	1/4"
MA40-NPT1/2	55	40	11.9	1/2"
MA40-NPT3/4	55	40	15.9	3/4"
MA40-NPT1	55	45	22.2	1"
MA50-NPT1/4	75	35	7.1	1/4"
MA50-NPT1/2	75	40	11.9	1/2"
MA50-NPT3/4	75	40	15.9	3/4"
MA50-NPT1	75	45	22.2	1"

KF Female PT Adaptor



Model No.	A	B	C	PT
FA16-PT1/8	19.05	25	17	1/8"
FA25-PT1/8	25.4	25	19	1/8"
FA40-PT1/8	38.1	25	32	1/8"
FA50-PT1/8	50.8	25	46	1/8"
FA16-PT1/4	19.05	25	17	1/4"
FA25-PT1/4	25.4	25	19	1/4"
FA40-PT1/4	38.1	25	32	1/4"
FA50-PT1/4	50.8	25	46	1/4"

KF Female NPT Adaptor

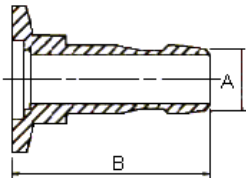


Model No.	A	B	C	NPT
FA16-NPT1/8	19.05	25	17	1/8"
FA25-NPT1/8	25.4	25	19	1/8"
FA40-NPT1/8	38.1	25	32	1/8"
FA50-NPT1/8	50.8	25	46	1/8"
FA16-NPT1/4	19.05	25	17	1/4"
FA25-NPT1/4	25.4	25	19	1/4"
FA40-NPT1/4	38.1	25	32	1/4"
FA50-NPT1/4	50.8	25	46	1/4"

KF Flanges & Components

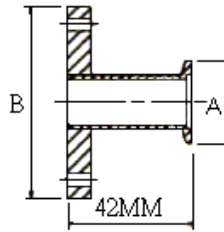
Dimension (mm)

KF Rubber Hose Adaptors



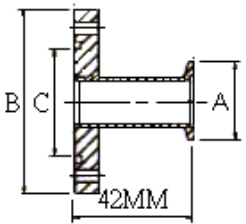
Model No.	A	B
RHA-10	12.7	40
RHA-16	19.05	40
RHA-25	25.4	40
RHA-40	38.1	50
RHA-50	50.8	50

KF To ASA Tubulated Adaptors



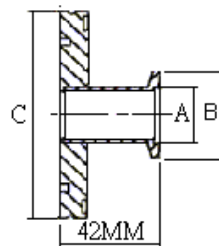
Model No.	A	B	ASA
TA40-A38	55	127	1-1/2"
TA40-A50	55	152	2"
TA40-A75	55	191	3"
TA50-A38	75	127	1-1/2"
TA50-A50	75	152	2"
TA50-A75	75	191	3"

KF To ASA Tubulated Adaptors with Groove O'ring



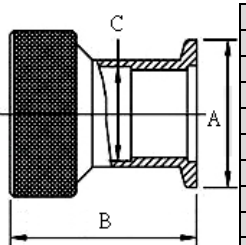
Model No.	A	B	C	ASA
TA40-A50G	55	152	88.5	2"
TA40-A75G	55	191	114.5	3"
TA50-A50G	75	152	88.5	2"
TA50-A75G	75	191	114.5	3"

KF To ISO Tubulated Adaptors



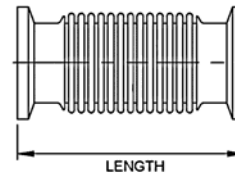
Model No.	A	B	C
TA25-ISO63	95	40	25.4
TA40-ISO63	95	55	38.1
TA50-ISO63	95	75	50.8
TA40-ISO80	110	55	38.1
TA50-ISO80	110	75	50.8
TA25-ISO100	130	40	25.4
TA40-ISO100	130	55	38.1
TA50-ISO100	130	75	50.8

KF Quick Disconnect Adaptors



Model No.	A	B	C	Tube Size
MDA16-1/4	30	33.30	6.60	1/4"
MDA16-1/2	30	36.50	13.00	1/2"
MDA16-3/4	30	46.00	19.40	3/4"
MDA25-1/2	40	35.00	13.00	1/2"
MDA25-3/4	40	44.45	19.30	3/4"
MDA25-1	40	50.80	25.65	1"
MDA40-1/2	55	35.00	13.00	1/2"
MDA40-3/4	55	44.45	19.30	3/4"
MDA40-1	55	50.80	25.65	1"
MDA40-1-1/2	55	60.30	38.40	1-1/2"
MDA50-1-1/2	75	60.30	38.40	1-1/2"
MDA50-2	75	63.50	51.00	2"

KF Hydroformed Bellow Connections

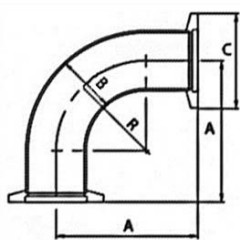


SIZE	LENGTH
KF16	CUSTOM-MADE
KF25	CUSTOM-MADE
KF40	CUSTOM-MADE
KF50	CUSTOM-MADE
KF63	CUSTOM-MADE
KF80	CUSTOM-MADE
KF100	CUSTOM-MADE

KF Flanges & Components

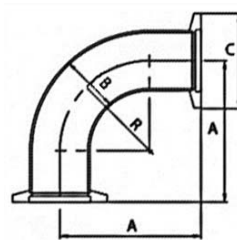
Dimension (mm)

90° Elbows – USA



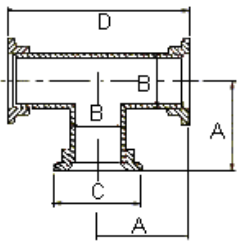
Model No.	A	B	C	R
E90A-16	38.3	19.05	30	28.6
E90A-25	56.2	25.4	40	38.1
E90A-40	78.4	38.1	55	57.2
E90A-50	107.0	50.8	75	76.2

90° Elbows – Europe



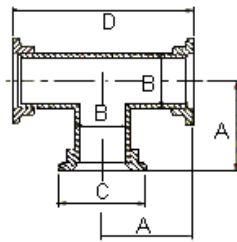
Model No.	A	B	C	R
E90E-16	40.0	19.05	30	28.6
E90E-25	50.8	25.4	40	38.1
E90E-40	65.0	38.1	55	57.2
E90E-50	80.0	50.8	75	76.2

Tees – USA



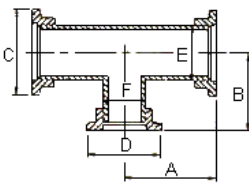
Model No.	A	B	C	D
TA-16	38.3	19.05	30	76.6
TA-25	51.4	25.4	40	102.8
TA-40	61.0	38.1	55	122.0
TA-50	80.0	50.8	75	160.0

Tees – Europe



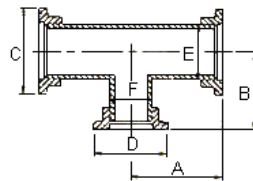
Model No.	A	B	C	D
TE-16	40	19.05	30	80
TE-25	50	25.4	40	100
TE-40	65	38.1	55	130
TE-50	70	50.8	75	140

Unequal Tees – USA



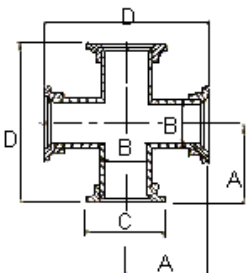
Model No.	A	B	C	D	E	F
UTA25-16	51.8	37.3	40	30	25.4	19.05
UTA40-16	62.5	51.8	55	30	38.1	19.05
UTA40-25	62.5	61.0	55	40	38.1	25.40
UTA50-16	81.5	58.2	75	30	50.8	19.05
UTA50-25	81.5	72.1	75	40	50.8	25.40
UTA50-40	81.5	70.0	75	55	50.8	38.10

Unequal Tees – Europe



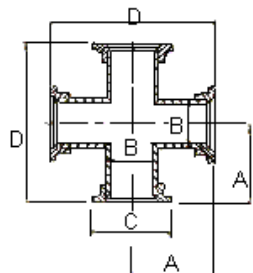
Model No.	A	B	C	D	E	F
UTE25-16	60	40	40	30	25.4	19.05
UTE40-16	65	40	55	30	38.1	19.05
UTE40-25	65	50	55	40	38.1	25.40
UTE50-16	70	50	75	30	50.8	19.05
UTE50-25	70	65	75	40	50.8	25.40
UTE50-40	70	65	75	55	50.8	38.10

KF 4-Way Crosses – USA



Model No.	A	B	C	D
4CA-16	38.3	19.05	30	76.6
4CA-25	51.4	25.4	40	102.8
4CA-40	61.0	38.1	55	122.0
4CA-50	80.0	50.8	75	160.0

KF 4-Way Crosses – Europe



Model No.	A	B	C	D
4CE-16	40	19.05	30	80
4CE-25	50	25.4	40	100
4CE-40	65	38.1	55	130
4CE-50	70	50.8	75	140

KF Flanges & Components

KF Oil Mist Eliminators

Features :

1. Eliminates oil fumes
2. Prevents loss of pump oil
3. Returns used oil to pump
4. Standard KF25 fitting
5. Long lasting polypropylene filter element (not paper)

Typical End Use :

1. For use in general, non-corrosive environments
2. Do not use in applications with high oxygen, silane, or condensable vapor content

Technical Data :

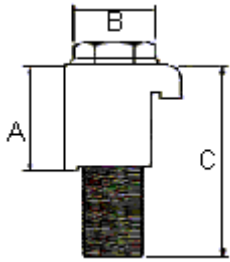
1. Body material : Polyamide
2. Filter Element Material : Polypropylene
3. Filter Element Pore Size : 0.1 Micron
4. Filter Element Replaceable : YES
5. Maximum Pump Throughput : 8 cfm
6. Flange Size : KF25



ISO Flanges & Components

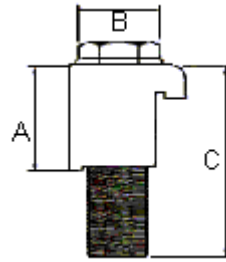
Dimension (mm)

ISO Single Wall Clamp Aluminum



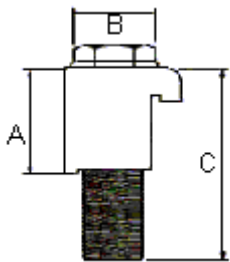
Model No.	A	B	C
ISC-AL-63/100	23.5	M8	35
ISC-AL-160/250	23.5	M10	35
ISC-AL-320/500	30.0	M12	50

ISO Single Wall Clamp Steel, Zinc Plated



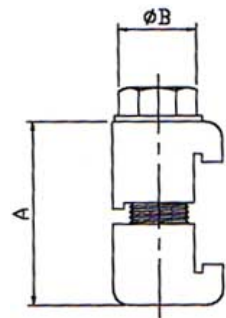
Model No.	A	B	C
ISC-SZ-63/100	23.5	M8	35
ISC-SZ-160/250	23.5	M10	35
ISC-SZ-320/500	30.0	M12	50

ISO Single Wall Clamp SS304



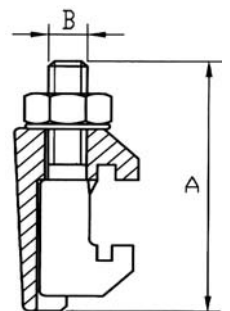
Model No.	A	B	C
ISC-63/100	23.5	M8	35
ISC-160/250	23.5	M10	35
ISC-320/500	30.0	M12	50

ISO Double Wall Clamp Aluminum



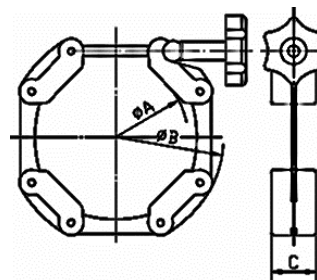
Model No.	A	B
IDC-63/100	45.0	M8
IDC-160/250	45.0	M10
IDC-320/500	60.0	M12

ISO Double Wall Clamp SS304



Model No.	A	B
IDC-63/250	61.5	M10
IDC-320/500	76.0	M12
IDC-630	86.0	M12

ISO Chain Clamp Aluminum, Knob: ABS

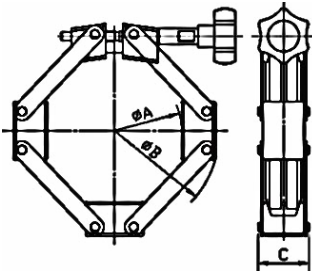


Model No.	A	B	C
CCP-63	78	112	20.5

ISO Flanges & Components

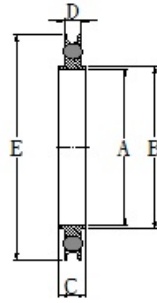
Dimension (mm)

ISO Chain Clamp Aluminum, Knob: ABS



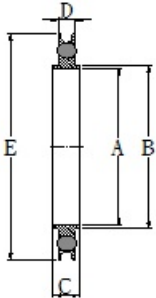
Model No.	A	B	C
CCP-80	165	100	38
CCP-100	185	122	38
CCP-150	235	174	38

ISO Aluminum Outer Ring, 304 Centering Ring, Viton O'ring



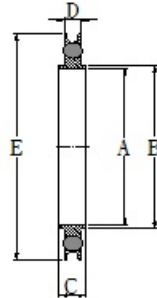
Model No.	A	B	C	D	E	O'ring Size
IOCRV-63	67.0	69.6	8	3.9	94	AS-337
IOCRV-80	80.0	82.5	8	3.9	109	AS-341
IOCRV-100	99.0	101.6	8	3.9	128	AS-347
IOCRV-160	150.0	152.6	8	3.9	179	AS-362
IOCRV-200	210.0	212.6	8	3.9	238	AS-372
IOCRV-250	257.5	260.4	8	3.9	287	AS-378
IOCRV-320	312.0	317.3	12	5.6	344	AS-454
IOCRV-400	394.0	399.2	12	5.6	446	AS-461
IOCRV-500	494.0	500.2	12	5.6	535	AS-469

ISO Aluminum Outer Ring, 304 Centering Ring, NBR O'ring



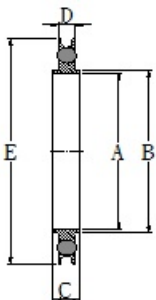
Model No.	A	B	C	D	E	O'ring Size
IOCRN-63	67.0	69.6	8	3.9	91	AS-336
IOCRN-80	80.0	82.5	8	3.9	104	AS-340
IOCRN-100	100.0	101.6	8	3.9	123	AS-346
IOCRN-160	150.0	152.6	8	3.9	170	AS-361
IOCRN-200	210.0	212.6	8	3.9	234	AS-371
IOCRN-250	257.5	260.4	8	3.9	285	AS-378
IOCRN-320	312.0	317.3	12	5.6	340	AS-454
IOCRN-400	394.0	399.2	12	5.6	416	AS-461
IOCRN-500	494.0	500.2	12	5.6	555	AS-470

ISO Aluminum Outer Ring, Aluminum Centering Ring, Viton O'ring



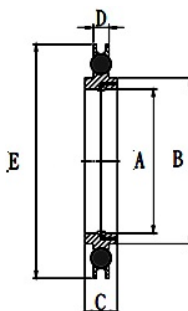
Model No.	A	B	C	D	E	O'ring Size
IOCRV-AL63	67.0	69.6	8	3.9	91	AS-336
IOCRV-AL80	80.0	82.5	8	3.9	104	AS-340
IOCRV-AL100	100.0	101.6	8	3.9	123	AS-346
IOCRV-AL160	150.0	152.6	8	3.9	170	AS-361
IOCRV-AL200	210.0	212.6	8	3.9	234	AS-371
IOCRV-AL250	257.5	260.4	8	3.9	285	AS-378
IOCRV-AL320	312.0	317.3	12	5.6	340	AS-454
IOCRV-AL400	394.0	399.2	12	5.6	416	AS-461
IOCRV-AL500	494.0	500.2	12	5.6	555	AS-470

ISO Aluminum Outer Ring, Aluminum Centering Ring, NBR O'ring



Model No.	A	B	C	D	E	O'ring Size
IOCRN-AL63	67.0	69.6	8	3.9	91	AS-336
IOCRN-AL80	80.0	82.5	8	3.9	104	AS-340
IOCRN-AL100	100.0	101.6	8	3.9	123	AS-346
IOCRN-AL160	150.0	152.6	8	3.9	170	AS-361
IOCRN-AL200	210.0	212.6	8	3.9	234	AS-371
IOCRN-AL250	257.5	260.4	8	3.9	285	AS-378
IOCRN-AL320	312.0	317.3	12	5.6	340	AS-454
IOCRN-AL400	394.0	399.2	12	5.6	416	AS-461
IOCRN-AL500	494.0	500.2	12	5.6	555	AS-470

ISO Aluminum Outer Ring, 304 Mesh Centering Ring, Viton O'ring

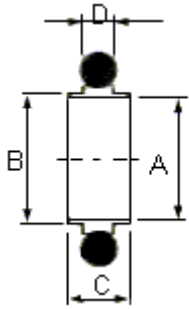


Model No.	A	B	C	D	E	O'ring
IOMCRV-63	60.5	69.6	8	3.9	94	AS-337
IOMCRV-80	73.6	82.6	8	3.9	109	AS-341
IOMCRV-100	91.8	101.6	8	3.9	128	AS-347
IOMCRV-160	143.5	152.6	8	3.9	179	AS-362

ISO Flanges & Components

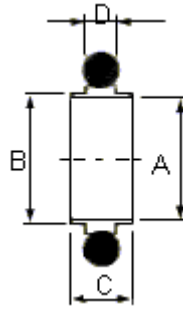
Dimension (mm)

ISO Centering Rings, Viton O'ring



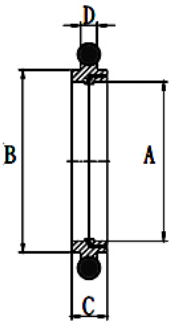
Model No.	A	B	C	D
ICRV-63	67.0	69.5	8	3.9
ICRV-80	80.0	82.6	8	3.9
ICRV-100	100.0	101.6	8	3.9
ICRV-160	150.0	152.6	8	3.9
ICRV-200	210.0	212.6	8	3.9
ICRV-250	257.5	260.4	8	3.9
ICRV-320	312.0	317.3	12	5.6
ICRV-400	394.0	399.2	12	5.6
ICRV-500	494.0	500.2	12	5.6

ISO Centering Rings, NBR O'ring



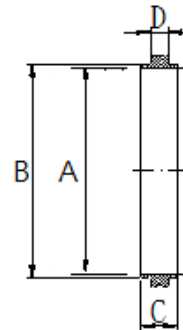
Model No.	A	B	C	D
ICRN-63	67.0	69.5	8	3.9
ICRN-80	80.0	82.6	8	3.9
ICRN-100	100.0	101.6	8	3.9
ICRN-160	150.0	152.6	8	3.9
ICRN-200	210.0	212.6	8	3.9
ICRN-250	257.5	260.4	8	3.9
ICRN-320	312.0	317.3	12	5.6
ICRN-400	394.0	399.2	12	5.6
ICRN-500	494.0	500.2	12	5.6

ISO Mesh Centering Rings, Viton O'ring



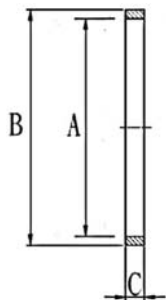
Model No.	A	B	C	D	O'ring
IMCRV-63	60.5	69.6	8	3.9	AS-337
IMCRV-80	73.6	82.6	8	3.9	AS-341
IMCRV-100	91.8	101.6	8	3.9	AS-347
IMCRV-160	143.5	152.6	8	3.9	AS-362

ISO Centering Ring



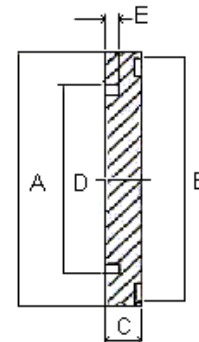
Model No.	A	B	C	D
ICR-63	67.0	69.6	8	3.9
ICR-80	80.0	82.5	8	3.9
ICR-100	99.0	101.6	8	3.9
ICR-160	150.0	152.6	8	3.9
ICR-200	210.0	212.6	8	3.9
ICR-250	257.5	260.4	8	3.9
ICR-320	312.0	317.3	12	5.6
ICR-400	394.0	399.2	12	5.6
ICR-500	494.0	500.2	12	5.6

ISO Overpressure Ring



Model No.	A	B	C
IOR-80	106.0	66.55	3.9
IOR-100	125.3	119.3	3.9
IOR-160	176.4	170.4	3.9

ISO Blank Flange

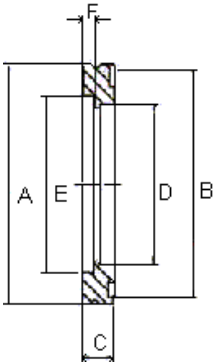


Model No.	A	B	C	D	E
IBL-63	95	90	12	70	4.5
IBL-80	110	105	12	83	4.5
IBL-100	130	125	12	102	4.5
IBL-160	180	175	12	153	4.5
IBL-200	240	235	12	213	4.5
IBL-250	290	285	12	261	4.5
IBL-320	370	365	17	318	4.5
IBL-400	450	445	17	400	4.5
IBL-500	550	545	17	501	4.5

ISO Flanges & Components

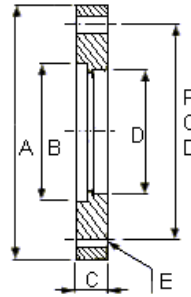
Dimension (mm)

ISO Bored Flange



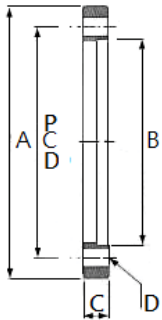
Model No.	A	B	C	D	E	F
IBF-63	95	90	12	63.7	70	4.5
IBF-80	110	105	12	76.4	83	4.5
IBF-100	130	125	12	101.8	102	4.5
IBF-160	180	175	12	152.9	153	4.5
IBF-200	240	235	12	203.7	213	4.5
IBF-250	290	285	12	254.5	261	4.5
IBF-320	370	365	17	305.3	318	4.5
IBF-400	450	445	17	406.9	400	4.5
IBF-500	550	545	17	508.8	501	4.5

ISO Bolted Flange



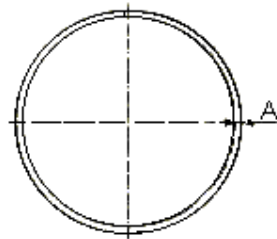
Model No.	A	B	C	D	E	P.C.D
IBTF-63	130	70	12	63.7	9x4	110
IBTF-80	145	83	12	76.4	9x8	125
IBTF-100	165	102	12	101.8	9x8	145
IBTF-160	225	153	16	152.9	11x8	200
IBTF-200	285	213	16	203.7	11x12	260
IBTF-250	335	261	16	254.5	11x12	310
IBTF-320	425	318	20	305.3	14x12	395
IBTF-400	510	400	20	406.9	14x16	480
IBTF-500	610	510	20	508.8	14x16	580

ISO Rotatable Bolt Ring



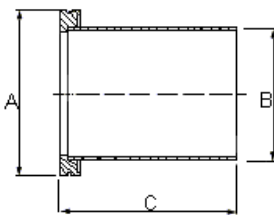
Model No.	A	B	C	D	P.C.D.
IRBR-63	130	98.5	12	9x4	110
IRBR-80	145	113.5	12	9x8	125
IRBR-100	165	133.5	12	9x8	145
IRBR-160	225	185.7	16	11x8	200
IRBR-200	285	245.7	16	11x12	260
IRBR-250	335	295.7	16	11x12	310
IRBR-320	425	375.8	20	14x12	395
IRBR-400	510	458.8	20	14x16	480
IRBR-500	610	558.8	20	14x16	580

ISO Split Retainer Ring



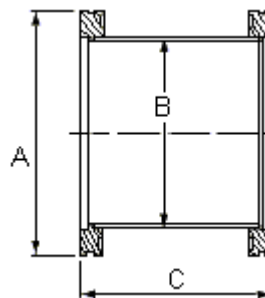
Model No.	A	P.C.D.
ISR-63	3	ISO63
ISR-80	3	ISO80
ISR-100	3	ISO100
ISR-160	5	ISO160
ISR-200	5	ISO200
ISR-250	5	ISO250
ISR-320	5	ISO320
ISR-400	8	ISO400
ISR-500	8	ISO500

ISO Half Nipple



Model No.	A	B	C
IWF-63	95	63.5	100
IWF-80	110	76.2	100
IWF-100	130	101.6	100
IWF-160	180	152.4	100
IWF-200	240	203.2	100
IWF-250	290	254.0	100
IWF-320	370	304.8	200
IWF-400	450	406.4	200
IWF-500	550	508.0	200

ISO Full Nipple

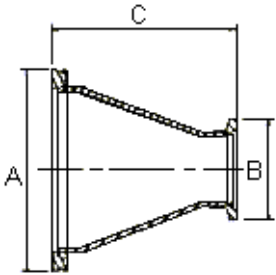


Model No.	A	B	C
INI-63	95	63.5	100
INI-80	110	76.2	100
INI-100	130	101.6	100
INI-160	180	152.4	100
INI-200	240	203.2	100
INI-250	290	254.0	100
INI-320	370	304.8	200
INI-400	450	406.4	200
INI-500	550	508.0	200

ISO Flanges & Components

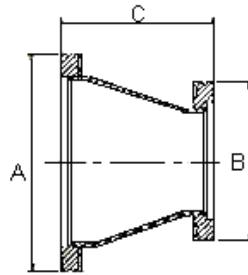
Dimension (mm)

ISO to NW Conical Reducing Adapter



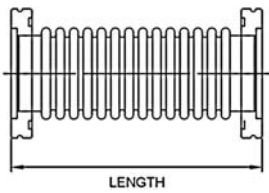
Model No.	A	B	C
RA40-ISO80	110	55	63
RA40-ISO100	130	55	63
RA50-ISO80	110	75	63
RA50-ISO100	130	75	63

ISO Conical Reducing Adapter



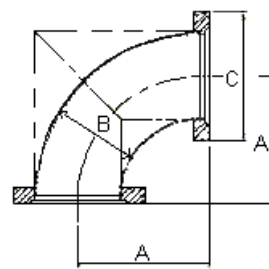
Model No.	A	B	C
IRA-80-100	110	130	63

ISO Bellow Connection



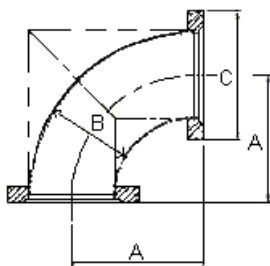
Size	Length
ISO63	CUSTOM-MADE
ISO80	CUSTOM-MADE
ISO100	CUSTOM-MADE

ISO 90° Elbow – USA



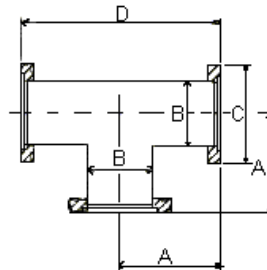
Model No.	A	B	C
IE90A-63	86.40	63.5	95
IE90A-80	101.60	76.2	110
IE90A-100	130.00	101.6	130
IE90A-160	160.20	152.4	180
IE90A-200	196.80	203.2	240
IE90A-250	247.65	254.0	290

ISO 90° Elbow – Europe



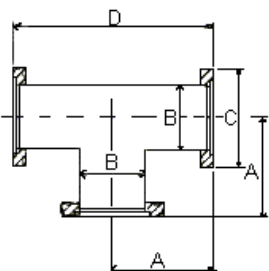
Model No.	A	B	C
IE90E-63	88	63.5	95
IE90E-80	98	76.2	110
IE90E-100	108	101.6	130
IE90E-160	138	152.4	180
IE90E-200	178	203.2	240
IE90E-250	208	254.0	290

ISO Tee – USA



Model No.	A	B	C	D
ITA-63	81.80	63.5	95	163.6
ITA-80	101.60	76.2	110	203.2
ITA-100	130.00	101.6	130	260.0
ITA-160	160.20	152.4	180	320.4
ITA-200	196.80	203.2	240	393.6
ITA-250	247.65	254.0	290	495.3

ISO Tee – Europe

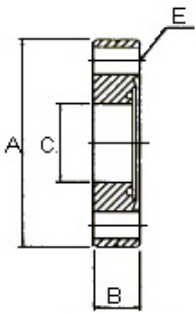


Model No.	A	B	C	D
ITE-63	88	63.5	95	176
ITE-80	98	76.2	110	196
ITE-100	108	101.6	130	216
ITE-160	138	152.4	180	276
ITE-200	178	203.2	240	356
ITE-250	208	254.0	290	416

CF Flanges & Components

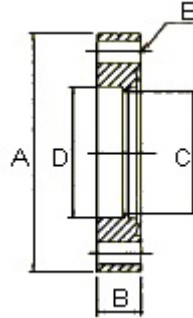
Dimension (mm)

CF16 Mini Bored Flange-Fixed (Figure 1)



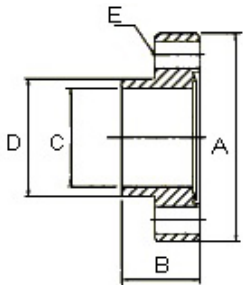
Model No.	A	B	C	ExNo.
BF-CF16-7	33.8	7.5	6.5	4.4x6

CF16 Mini Bored Flange-Fixed (Figure 2)



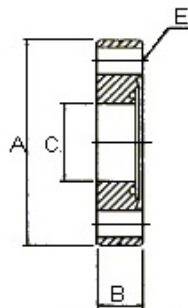
Model No.	A	B	C	D	ExNo.
BF-CF16-12	33.8	7.5	9.5	12.90	4.4x6
BF-CF16-19	33.8	7.5	16.0	19.15	4.4x6

CF16 Mini Bored Flange-Fixed (Figure 3)



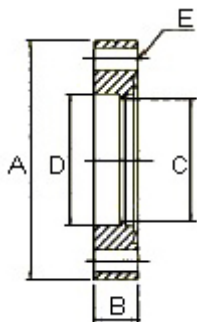
Model No.	A	B	C	D	ExNo.
BF-CF16-N7	33.8	12.7	4.5	6.35	4.4x6
BF-CF16-N12	33.8	12.7	9.5	12.70	4.4x6
BF-CF16-N19	33.8	12.7	16.0	19.05	4.4x6

CF16 Mini Bored Flange -Tapped Bolts Holes (Figure 1)



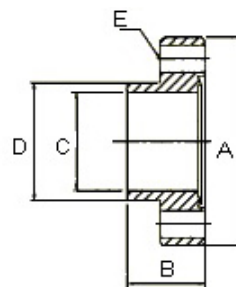
Model No.	A	B	C	ExNo.
BF-CF16-T7	33.8	7.5	6.5	M4x6

CF16 Mini Bored Flange-Tapped Bolts Holes (Figure 2)



Model No.	A	B	C	D	ExNo.
BF-CF16-T12	33.8	7.5	9.5	12.90	M4x6
BF-CF16-T19	33.8	7.5	16.0	19.15	M4x6

CF16 Mini Bored Flange-Tapped Bolts Holes (Figure 3)



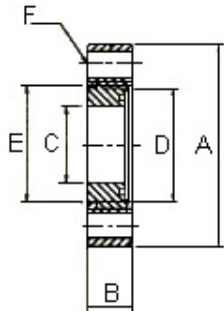
Model No.	A	B	C	D	ExNo.
BF-CF16-TN7	33.8	12.7	4.5	6.35	M4x6
BF-CF16-TN12	33.8	12.7	9.5	12.70	M4x6
BF-CF16-TN19	33.8	12.7	16.0	19.05	M4x6

CF Flanges & Components

Dimension (mm)

CF16 Mini Bored Flange -Rotatable

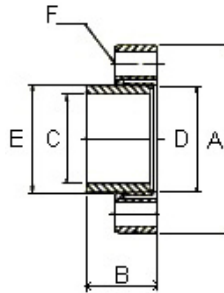
(Figure 1)



Model No.	A	B	C	D	E	FxNo.
BF-CR16-7	33.8	7.5	4.5	6.50	6.60	4.4x6
BF-CR16-12	33.8	7.5	9.5	12.90	13.00	4.4x6
BF-CR16-19	33.8	7.5	16.0	19.05	19.15	4.4x6

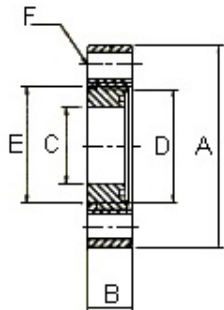
CF16 Mini Bored Flange-Rotatable

(Figure 2)



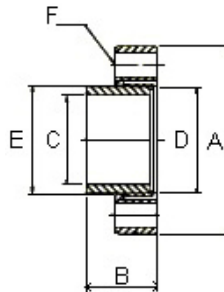
Model No.	A	B	C	D	E	FxNo.
BF-CR16-N7	33.8	12.7	4.5	6.35	6.45	4.4x6
BF-CR16-N12	33.8	12.7	9.5	12.70	13.00	4.4x6
BF-CR16-N19	33.8	12.7	16.0	19.05	19.15	4.4x6

CF16 Mini Bored Flange-Tapped Bolt Holes, Rotatable (Figure 1)



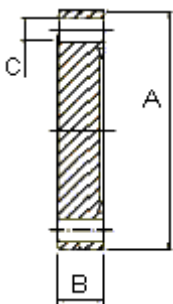
Model No.	A	B	C	D	E	FxNo.
BF-CR16-T7	33.8	7.5	4.5	6.50	6.60	M4x6
BF-CR16-T12	33.8	7.5	9.5	12.90	13.00	M4x6
BF-CR16-T19	33.8	7.5	16.0	19.05	19.15	M4x6

CF16 Mini Bored Flange-Tapped Bolt Holes, Rotatable (Figure 2)



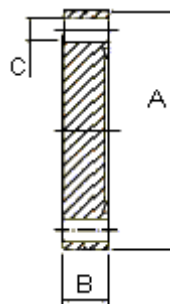
Model No.	A	B	C	D	E	FxNo.
BF-CR16-TN7	33.8	12.7	4.5	6.35	6.45	M4x6
BF-CR16-TN12	33.8	12.7	9.5	12.70	13.00	M4x6
BF-CR16-TN19	33.8	12.7	16.0	19.05	19.15	M4x6

CF Blank Flange-Fixed



Model No.	A	B	CxNo.
BL-CF16	33.80	7.5	4.4x6
BL-CF35	69.50	12.7	6.7x6
BL-CF63	113.60	18.0	8.4x8
BL-CF100	151.60	20.0	8.4x16
BL-CF150	202.50	22.0	8.4x20
BL-CF200	253.20	24.7	8.4x24
BL-CF250	336.55	28.5	10.3x30
BL-CF300	355.60	28.5	10.3x30
BL-CF350	419.10	28.5	10.3x36

CF Blank Flange-Tapped Bolt Holes

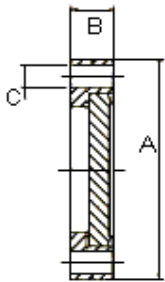


Model No.	A	B	CxNo.
BL-CFT16	33.80	7.5	M4x6
BL-CFT35	69.50	12.7	M6x6
BL-CFT63	113.60	18.0	M8x8
BL-CFT100	151.60	20.0	M8x16
BL-CFT150	202.50	22.0	M8x20
BL-CFT200	253.20	24.7	M8x24
BL-CFT250	336.55	28.5	M10x30
BL-CFT300	355.60	28.5	M10x30
BL-CFT350	419.10	28.5	M10x36

CF Flanges & Components

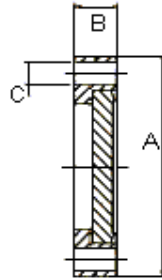
Dimension (mm)

CF Blank Flange-Rotatable



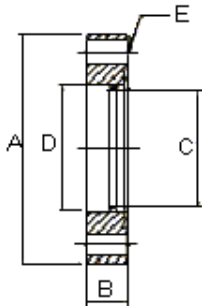
Model No.	A	B	CxNo.
BL-CR16	33.80	7.5	4.4x6
BL-CR35	69.50	12.7	6.7x6
BL-CR63	113.60	19.0	8.4x8
BL-CR100	151.60	21.5	8.4x16
BL-CR150	202.50	24.0	8.4x20
BL-CR200	253.20	25.0	8.4x24
BL-CR250	336.55	28.5	10.3x30
BL-CR300	355.60	28.5	10.3x30
BL-CR350	419.10	28.5	10.3x36

CF Blank Flange-Tapped Bolt Holes, Rotatable



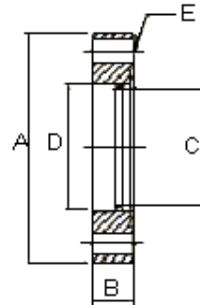
Model No.	A	B	CxNo.
BL-CRT16	33.80	7.5	M4x6
BL-CRT35	69.50	12.7	M6x6
BL-CRT63	113.60	18.0	M8x8
BL-CRT100	151.60	20.0	M8x16
BL-CRT150	202.50	22.0	M8x20
BL-CRT200	253.20	24.7	M8x24
BL-CRT250	336.55	28.5	M10x30
BL-CRT300	355.60	28.5	M10x30
BL-CRT350	419.10	28.5	M10x36

CF Bored Flange-Fixed



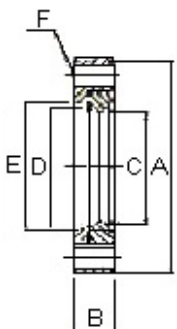
Model No.	A	B	C	D	FxNo.
BF-CF35-25	69.50	12.7	23.4	25.6	6.7x6
BF-CF35-38	69.50	12.7	35.5	38.3	6.7x6
BF-CF35-41	69.50	12.7	40.1	41.3	6.7x6
BF-CF63-51	113.60	18.0	49.6	51.1	8.4x8
BF-CF63-63	113.60	18.0	60.4	63.7	8.4x8
BF-CF100-100	151.60	20.0	97.5	101.8	8.4x16
BF-CF150-150	202.50	22.0	147.6	152.8	8.4x20
BF-CF200-200	253.20	24.7	198.9	203.7	8.4x24
BF-CF250-250	336.55	28.5	250.0	254.5	10.3x30
BF-CF300-300	355.60	28.5	298.45	305.4	10.3x30
BF-CF350-350	419.10	28.5	349.25	356.1	10.3x36

CF Bored Flange-Tapped Bolt Holes



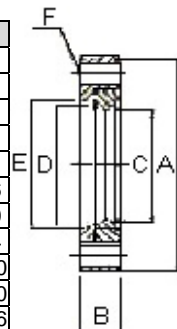
Model No.	A	B	C	D	FxNo.
BF-CFT35-25	69.50	12.7	23.4	25.6	M6x6
BF-CFT35-38	69.50	12.7	35.5	38.3	M6x6
BF-CFT35-41	69.50	12.7	40.1	41.3	M6x6
BF-CFT63-51	113.60	18.0	49.6	51.1	M8x8
BF-CFT63-63	113.60	18.0	60.4	63.7	M8x8
BF-CFT100-100	151.60	20.0	97.5	101.8	M8x16
BF-CFT150-150	202.50	22.0	147.6	152.8	M8x20
BF-CFT200-200	253.20	24.7	198.9	203.7	M8x24
BF-CFT250-250	336.55	28.5	250.0	254.5	M10x30
BF-CFT300-300	355.60	28.5	298.45	305.4	M10x30
BF-CFT350-350	419.10	28.5	349.25	356.1	M10x36

CF Bored Flange—Rotatable



Model No.	A	B	C	D	E	FxNo.
BF-CR35-25	69.50	12.7	23.4	25.6	39.0	6.7x6
BF-CR35-38	69.50	12.7	35.5	38.3	39.0	6.7x6
BF-CR35-41	69.50	12.7	40.1	41.3	39.0	6.7x6
BF-CR63-51	113.60	19.0	49.6	51.1	67.0	8.4x8
BF-CR63-63	113.60	19.0	60.4	63.7	67.0	8.4x8
BF-CR100-100	151.60	21.5	97.5	101.8	105.0	8.4x16
BF-CR150-150	202.50	24.0	147.6	152.8	155.5	8.4x20
BF-CR200-200	253.20	25.0	198.9	203.7	206.5	8.4x24
BF-CR250-250	336.55	28.5	250.0	254.5	258.5	10.3x30
BF-CR300-300	355.60	28.5	298.45	305.4	308.6	10.3x30
BF-CR350-350	419.10	28.5	349.25	356.1	358.7	10.3x36

CF Bored Flange -Tapped Bolt Holes, Rotatable

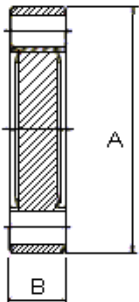


Model No.	A	B	C	D	E	FxNo.
BF-CRT35-25	69.50	12.7	23.40	25.60	39.0	M6x6
BF-CRT35-38	69.50	12.7	35.50	38.30	39.0	M6x6
BF-CRT35-41	69.50	12.7	40.10	41.30	39.0	M6x6
BF-CRT63-51	113.60	19.0	49.60	51.10	67.0	M8x8
BF-CRT63-63	113.60	19.0	60.40	63.70	67.0	M8x8
BF-CRT100-100	151.60	21.5	97.50	101.80	105.0	M8x16
BF-CRT150-150	202.50	24.0	147.60	152.80	155.5	M8x20
BF-CRT200-200	253.20	25.0	198.90	203.70	206.5	M8x24
BF-CRT250-250	336.55	28.5	250.00	254.50	258.5	M10x30
BF-CRT300-300	355.60	28.5	298.45	305.40	308.6	M10x30
BF-CRT350-350	419.10	28.5	349.25	356.10	358.7	M10x36

CF Flanges & Components

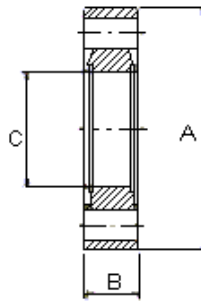
Dimension (mm)

CF Double Side Blank Flange



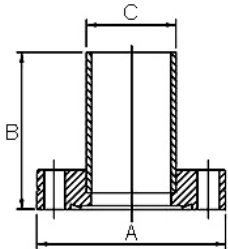
Model No.	A	B
DSBL-CF16	33.8	7.5
DSBL-CF35	69.5	12.7
DSBL-CF63	113.6	18.0
DSBL-CF100	151.6	20.0
DSBL-CF150	202.5	22.0
DSBL-CF200	253.2	24.7
DSBL-CF250	336.55	28.5
DSBL-CF300	355.6	28.5
DSBL-CF350	419.1	28.5

CF Double Side Bored Flange



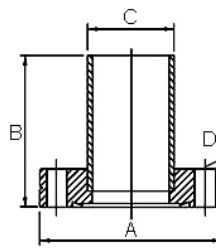
Model No.	A	B	C
DSBF-CF16	33.8	7.5	16.0
DSBF-CF35	69.5	12.7	35.5
DSBF-CF63	113.6	18.0	60.4
DSBF-CF100	151.6	20.0	97.5
DSBF-CF150	202.5	22.0	147.6
DSBF-CF200	253.2	24.7	198.9
DSBF-CF250	336.55	28.5	250.0
DSBF-CF300	355.6	28.5	298.45
DSBF-CF350	419.1	28.5	349.25

CF Half Nipple, Fixed



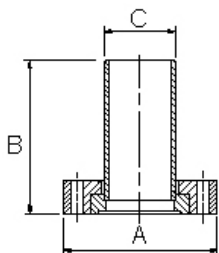
Model No.	A	B	C
HN-CF16	33.8	38.1	19.05
HN-CF35	69.5	62.5	38.1
HN-CF63	113.6	104.6	63.5
HN-CF100	151.6	135.0	101.6
HN-CF150	202.5	166.6	152.4
HN-CF200	253.2	203.2	203.2

CF Half Nipple with Tapped Flange, Fixed



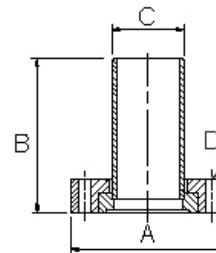
Model No.	A	B	C	D
HN-CFT16	33.8	38.1	19.05	M4
HN-CFT35	69.5	62.5	38.1	M6
HN-CFT63	113.6	104.6	63.5	M8
HN-CFT100	151.6	135.0	101.6	M8
HN-CFT150	202.5	166.6	152.4	M8
HN-CFT200	253.2	203.2	203.2	M8

CF Half Nipple, Rotatable



Model No.	A	B	C
HN-CR16	33.8	38.1	19.05
HN-CR35	69.5	62.5	38.1
HN-CR63	113.6	104.6	63.5
HN-CR100	151.6	135.0	101.6
HN-CR150	202.5	166.6	152.4
HN-CR200	253.2	203.2	203.2

CF Half Nipple with Tapped Flange, Rotatable

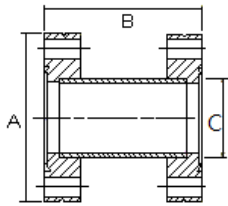


Model No.	A	B	C	D
HN-CRT16	33.8	38.1	19.05	M4
HN-CRT35	69.5	62.5	38.1	M6
HN-CRT63	113.6	104.6	63.5	M8
HN-CRT100	151.6	135.0	101.6	M8
HN-CRT150	202.5	166.6	152.4	M8
HN-CRT200	253.2	203.2	203.2	M8

CF Flanges & Components

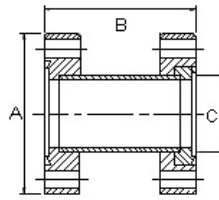
Dimension (mm)

CF Nipple, Fixed



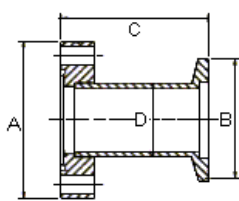
Model No.	A	B	C
NI-CF16	33.8	76	19.05
NI-CF35	69.5	126	38.1
NI-CF63	113.6	210	63.5
NI-CF100	151.6	270	101.6
NI-CF150	202.5	334	152.4
NI-CF200	253.2	334	203.2

CF Nipple, 1 Flange Rotatable



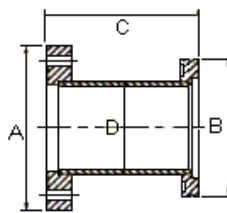
Model No.	A	B	C
NI-CR16	33.8	76	19.05
NI-CR35	69.5	126	38.1
NI-CR63	113.6	210	63.5
NI-CR100	151.6	270	101.6
NI-CR150	202.5	334	152.4
NI-CR200	253.2	334	203.2

CF to KF Tubulated Adapter



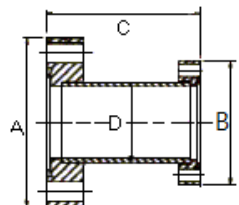
Model No.	A	B	C	D
TA-CF16-KF10	33.8	30	43.0	12.7
TA-CF16-KF16	33.8	30	43.0	19.05
TA-CF35-KF10	69.5	30	45.3	12.7
TA-CF35-KF16	69.5	30	45.3	19.05
TA-CF35-KF25	69.5	40	45.3	25.4
TA-CF35-KF40	69.5	55	45.3	38.1
TA-CF63-KF25	113.6	40	49.5	25.4
TA-CF63-KF40	113.6	55	49.5	38.1
TA-CF63-KF50	113.6	75	49.5	50.8

CF to ISO Tubulated Adapter



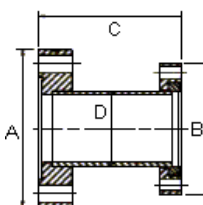
Model No.	A	B	C	D
TA-CF63-ISO63	113.6	95	90	63.5
TA-CF100-ISO63	151.6	95	90	76.2
TA-CF100-ISO100	151.6	130	90	101.6
TA-CF100-ISO160	151.6	180	90	101.6
TA-CF150-ISO63	202.5	95	90	76.2
TA-CF150-ISO100	202.5	130	90	114.3
TA-CF150-ISO160	202.5	180	90	152.4

CF Reducing Adapter



Model No.	A	B	C	D
RA-CF35-16	69.5	33.8	76.2	19.05
RA-CF63-16	113.6	33.8	76.2	19.05
RA-CF63-35	113.6	69.5	76.2	38.1
RA-CF100-35	151.6	69.5	76.2	38.1
RA-CF100-63	151.6	113.6	76.2	63.5
RA-CF150-35	202.5	69.5	76.2	38.1
RA-CF150-63	202.5	113.6	76.2	63.5
RA-CF150-100	202.5	151.6	76.2	101.6

CF Reducing Adapter, Small Flange Rotatable

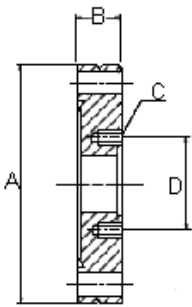


Model No.	A	B	C	D
RA-CF35-CR16	69.5	33.8	76.2	19.05
RA-CF63-CR16	113.6	33.8	76.2	19.05
RA-CF63-CR35	113.6	69.5	76.2	38.1
RA-CF100-CR35	151.6	69.5	76.2	38.1
RA-CF100-CR63	151.6	113.6	76.2	63.5
RA-CF150-CR35	202.5	69.5	76.2	38.1
RA-CF150-CR63	202.5	113.6	76.2	63.5
RA-CF150-CR100	202.5	151.6	76.2	101.6

CF Flanges & Components

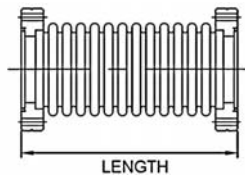
Dimension (mm)

CF Reducing Flange Adapter



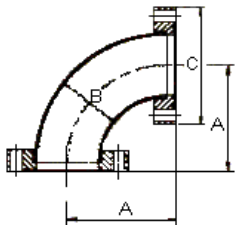
Model No.	A	B	CxNo.	D
RF-CF35-16	69.5	12.7	M4x6	26.9
RF-CF63-16	113.5	18.0	M4x6	26.9
RF-CF63-35	113.6	18.0	M6x6	58.7
RF-CF100-35	151.6	20.0	M6x6	58.7
RF-CF100-63	151.6	20.0	M8x8	92.1
RF-CF150-35	202.5	22.0	M6x6	58.7
RF-CF150-63	202.5	22.0	M8x8	92.7
RF-CF150-100	202.5	22.0	M8x16	130.3
RF-CF200-35	253.2	24.7	M6x6	58.7
RF-CF200-63	253.2	24.7	M8x8	92.1
RF-CF200-100	253.2	24.7	M8x16	130.3
RF-CF200-150	253.2	24.7	M8x20	181.0
RF-CF250-35	336.55	28.5	M6x6	58.7
RF-CF250-63	336.55	28.5	M8x8	92.1
RF-CF250-100	336.55	28.5	M8x16	130.3
RF-CF250-150	336.55	28.5	M8x20	181.0
RF-CF250-200	336.55	28.5	M8x24	231.8

CF Bellow



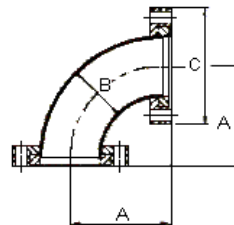
Size	Length
CF16	Custom-Made
CF35	Custom-Made
CF63	Custom-Made
CF100	Custom-Made

CF 90° Elbow - Fixed



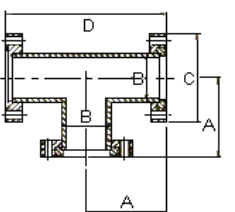
Model No.	A	B	C
E90-CF16	38	19.05	33.8
E90-CF35	63	38.1	69.5
E90-CF63	105	63.5	113.6
E90-CF100	135	101.6	151.6
E90-CF150	167	152.4	202.5
E90-CF200	203	203.2	253.2

CF 90° Elbow - Rotatable



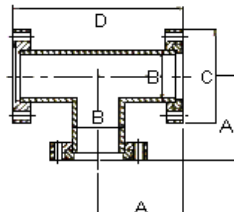
Model No.	A	B	C
E90-CR16	38	19.05	33.8
E90-CR35	63	38.1	69.5
E90-CR63	105	63.5	113.6
E90-CR100	135	101.6	151.6
E90-CR150	167	152.4	202.5
E90-CR200	203	203.2	253.2

CF Tee - Fixed



Model No.	A	B	C	D
T-CF16	38	19.05	33.8	76
T-CF35	63	38.10	69.5	126
T-CF63	105	63.50	113.6	210
T-CF100	135	101.60	151.6	270
T-CF150	167	152.40	202.5	334
T-CF200	203	203.20	253.2	406

CF Tee- 2 Flanges Rotatable

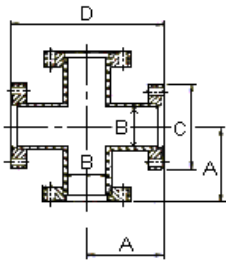


Model No.	A	B	C	D
T-CR16	38	19.05	33.8	76
T-CR35	63	38.10	69.5	126
T-CR63	105	63.50	113.6	210
T-CR100	135	101.60	151.6	270
T-CR150	167	152.40	202.5	334
T-CR200	203	203.20	253.2	406

CF Flanges & Components

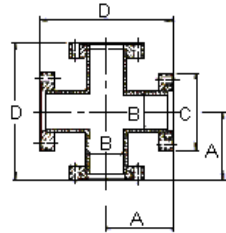
Dimension (mm)

CF 4 Way Cross - Fixed



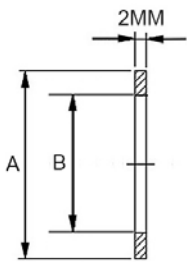
Model No.	A	B	C	D
4C-CF16	38	19.05	33.8	76
4C-CF35	63	38.1	69.5	126
4C-CF63	105	63.5	113.6	210
4C-CF100	135	101.6	151.6	270
4C-CF150	167	152.4	202.5	334
4C-CF200	203	203.2	253.2	406

CF 4 Way Cross – 2 Flange Rotatable



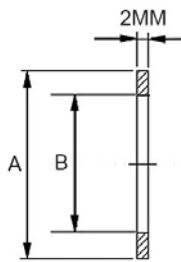
Model No.	A	B	C	D
4C-CR16	38	19.05	33.8	76
4C-CR35	63	38.1	69.5	126
4C-CR63	105	63.5	113.6	210
4C-CR100	135	101.6	151.6	270
4C-CR150	167	152.4	202.5	334
4C-CR200	203	203.2	253.2	406

CF Copper Gasket



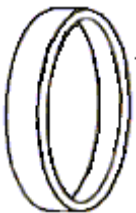
Model No.	A	B
CG-CF16	21	16
CG-CF35	48	37
CG-CF63	82	63
CG-CF100	120	101
CG-CF150	171	152
CG-CF200	222	203
CG-CF250	272.7	254

CF Silver Plated Copper Gasket



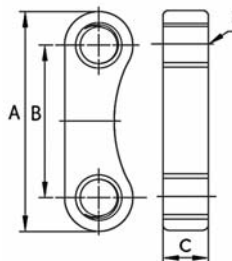
Model No.	A	B
CGS-CF16	21	16
CGS-CF35	48	37
CGS-CF63	82	63
CGS-CF100	120	101
CGS-CF150	171	152
CGS-CF200	222	203
CGS-CF250	272.7	254

CF Flange Cap



Model No.	Suitable Flange
C-CF63	CF63
C-CF100	CF100
C-CF150	CF150
C-CF200	CF200
C-CF250	CF250
C-CF300	CF300
C-CF350	CF350
C-CF400	CF400
C-CF500	CF500

CF Plate Nut



Model No.	A	B	C	D
N-CF16	19.5	13.5	4	M4
N-CF35	39.5	29.5	6	M6
N-CF63	50.2	35.2	8	M8

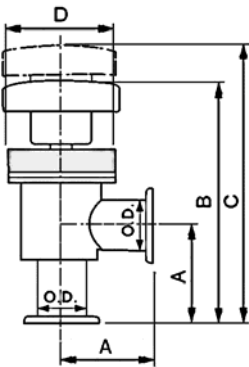
Vacuum Valves

KF Manually Operated Angle Valve with Bellows

Features :

1. Viton o'ring sealed bonnets.
2. Viton o'ring sealed poppets.
3. Bakeable to 204°C.
4. Viton Seal Bonnet : 10⁻⁹ Torr Vacuum Rating.

Dimension (mm)



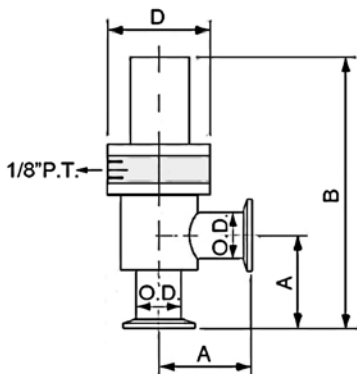
SIZE	TUBE OD	A	B	C	D
KF16	3/4"	54.70	122.70	141.50	56.80
KF25	1"	51.60	127.30	143.30	56.80
KF40	1-1/2"	60.96	160.00	199.20	75.00
KF50	2"	86.40	206.90	251.90	89.40

KF Pneumatically Actuated Angle Valve with Bellows

Features :

1. Viton o'ring sealed bonnets.
2. Viton o'ring sealed poppets.
3. Bakeable to 204°C.
4. Viton Seal Bonnet : 10⁻⁹ Torr Vacuum Rating.
5. Electropneumatically Operated

Dimension (mm)



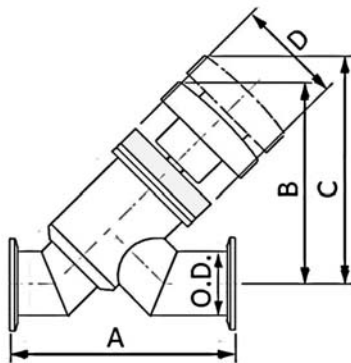
SIZE	TUBE OD	A	B	D
KF16	3/4"	54.70	138.80	56.80
KF25	1"	51.60	150.40	56.80
KF40	1-1/2"	60.96	195.60	75.00
KF50	2"	86.40	262.40	89.40

Vacuum Valves

KF Manually Operated Angle-Inline Valve with Bellows

Features :

1. Viton o'ring sealed bonnets.
2. Viton o'ring sealed poppets.
3. Bakeable to 204°C.
4. Viton Seal Bonnet : 10⁻⁹ Torr Vacuum Rating.



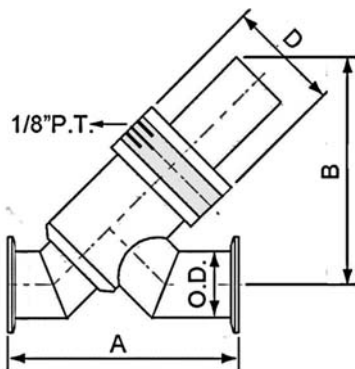
Dimension (mm)

SIZE	TUBE OD	A	B	C	D
KF16	3/4"	101.60	88.10	101.85	56.80
KF25	1"	106.70	86.87	105.16	56.80
KF40	1-1/2"	130.00	115.57	142.50	75.00
KF50	2"	177.80	157.23	232.41	89.40

KF Pneumatically Actuated Angle-Inline Valve with Bellows

Features :

1. Viton o'ring sealed bonnets.
2. Viton o'ring sealed poppets.
3. Bakeable to 204°C.
4. Viton Seal Bonnet : 10⁻⁹ Torr Vacuum Rating.
5. Electropneumatically Operated



Dimension (mm)

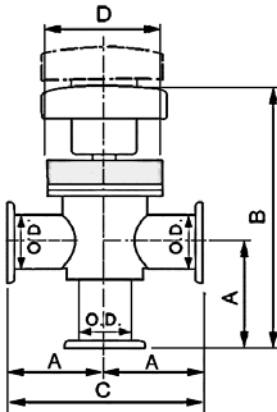
SIZE	TUBE OD	A	B	D
KF16	3/4"	101.60	88.10	56.80
KF25	1"	106.70	86.87	56.80
KF40	1-1/2"	130.00	115.57	75.00
KF50	2"	177.80	157.23	89.40

Vacuum Valves

KF Manually Operated Tee Valve with Bellows

Features :

1. Viton o'ring sealed bonnets.
2. Viton o'ring sealed poppets.
3. Bakeable to 204°C.
4. Viton Seal Bonnet : 10⁻⁹ Torr Vacuum Rating.



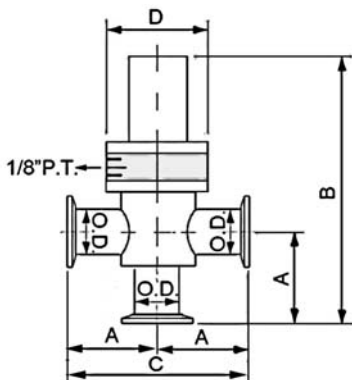
Dimension (mm)

SIZE	TUBE OD	A	B	C	D
KF16	3/4"	54.70	122.70	109.40	56.80
KF25	1"	51.60	127.30	103.20	56.80
KF40	1-1/2"	60.96	160.00	122.00	75.00
KF50	2"	86.40	206.90	172.80	89.40

KF Pneumatically Actuated Tee Valve with Bellows

Features :

1. Viton o'ring sealed bonnets.
2. Viton o'ring sealed poppets.
3. Bakeable to 204°C.
4. Viton Seal Bonnet : 10⁻⁹ Torr Vacuum Rating.
5. Electropneumatically Operated



Dimension (mm)

SIZE	TUBE OD	A	B	C	D
KF16	3/4"	54.70	157.00	109.40	56.80
KF25	1"	51.60	150.90	103.20	56.80
KF40	1-1/2"	60.96	195.80	122.00	75.00
KF50	2"	86.40	261.10	172.80	89.40

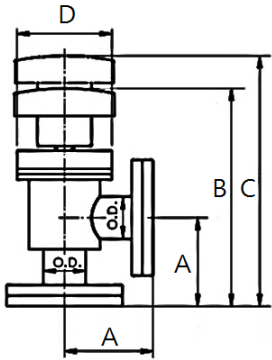
Vacuum Valves

CF Manually Operated Copper Seal Bonnet Angle Valve with Bellows

Features :

1. Viton o'ring sealed bonnets.
2. Viton o'ring sealed poppets.
3. Bakeable to 204°C.
4. Viton Seal Bonnet : 10⁻⁹ Torr Vacuum Rating.

Dimension (mm)



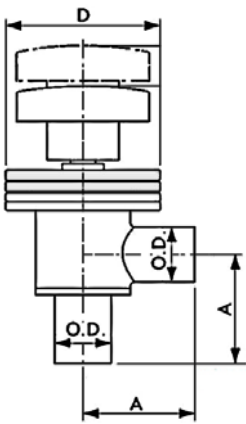
SIZE	TUBE OD	A	B	C	D
CF16	3/4"	57.20	128.50	147.60	56.80
CF35	1-1/2"	62.30	148.40	186.50	75.00

Vacuum Valves

Manually Operated Angle Valve with Bellows Tube End

Features :

1. Viton o'ring sealed bonnets.
2. Viton o'ring sealed poppets.
3. Bakeable to 204°C.
4. Viton Seal Bonnet : 10⁻⁹ Torr Vacuum Rating.



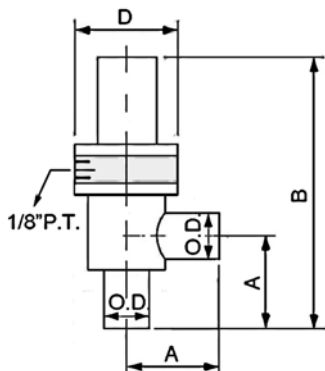
Dimension (mm)

TUBE OD	A	D
3/4"	46.70	56.80
1"	47.30	56.80
1-1/2"	54.00	75.00
2"	82.10	89.40

Pneumatically Actuated Angle Valve with Bellows Tube End

Features :

1. Viton o'ring sealed bonnets.
2. Viton o'ring sealed poppets.
3. Bakeable to 204°C.
4. Viton Seal Bonnet : 10⁻⁹ Torr Vacuum Rating.
5. Electropneumatically Operated



Dimension (mm)

TUBE OD	A	B	D
3/4"	54.70	138.80	56.80
1"	51.60	150.40	56.80
1-1/2"	60.96	195.60	75.00
2"	86.40	262.40	89.40

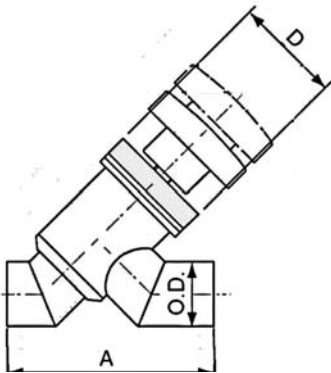
Vacuum Valves

Manually Operated Angle Inline Valve with Bellows Tube End

Features :

1. Viton o'ring sealed bonnets.
2. Viton o'ring sealed poppets.
3. Bakeable to 204°C.
4. Viton Seal Bonnet : 10⁻⁹ Torr Vacuum Rating.

Dimension (mm)



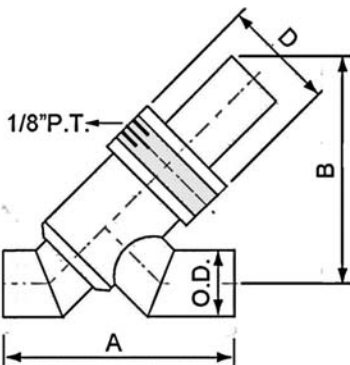
TUBE OD	A	D
3/4"	93.00	56.80
1"	98.00	56.80
1-1/2"	116.00	75.00
2"	168.50	89.40

Pneumatically Actuated Angle Inline Valve with Bellows Tube End

Features :

1. Viton o'ring sealed bonnets.
2. Viton o'ring sealed poppets.
3. Bakeable to 204°C.
4. Viton Seal Bonnet : 10⁻⁹ Torr Vacuum Rating.
5. Electropneumatically Operated

Dimension (mm)



TUBE OD	A	B	D
3/4"	101.60	88.10	56.80
1"	106.70	86.87	56.80
1-1/2"	130.00	115.57	75.00
2"	177.80	157.23	89.40

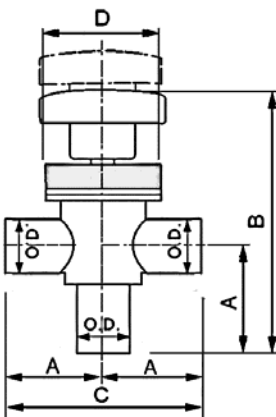
Vacuum Valves

Manually Operated Tee Valve with Bellows Tube End

Features :

1. Viton o'ring sealed bonnets.
2. Viton o'ring sealed poppets.
3. Bakeable to 204°C.
4. Viton Seal Bonnet : 10⁻⁹ Torr Vacuum Rating.

Dimension (mm)



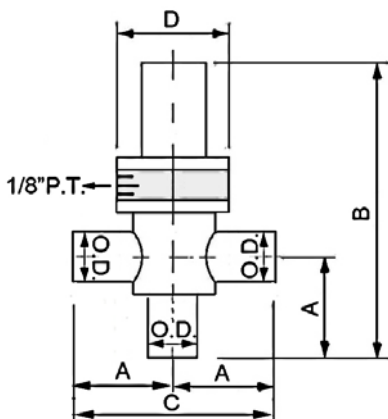
TUBE OD	A	B	C	D
3/4"	54.70	122.70	109.40	56.80
1"	51.60	127.30	103.20	56.80
1-1/2"	60.96	160.00	122.00	75.00
2"	86.40	206.90	172.80	89.40

Pneumatically Actuated Tee Valve with Bellows Tube End

Features :

1. Viton o'ring sealed bonnets.
2. Viton o'ring sealed poppets.
3. Bakeable to 204°C.
4. Viton Seal Bonnet : 10⁻⁹ Torr Vacuum Rating.
5. Electropneumatically Operated

Dimension (mm)

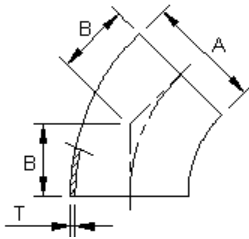


TUBE OD	A	B	C	D
3/4"	54.70	122.70	109.40	56.80
1"	51.60	127.30	103.20	56.80
1-1/2"	60.96	160.00	122.00	75.00
2"	86.40	206.90	172.80	89.40

Weld Fittings

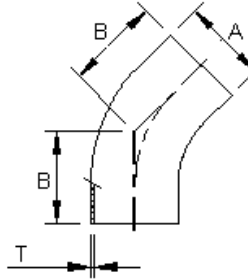
Dimension (mm)

45° Short Elbows



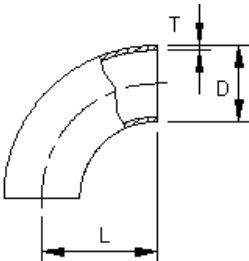
Model No.	Tube OD	A	B	T
2WK-075	3/4"	19.05	8.0	1.65
2WK-100	1"	25.4	15.9	1.65
2WK-150	1.5"	38.1	23.8	1.65
2WK-200	2"	50.8	31.8	1.65
2WK-250	2.5"	63.5	39.7	1.65
2WK-300	3"	76.2	47.6	1.65
2WK-400	4"	101.6	63.5	2.10

45° Long Elbows



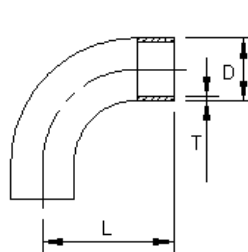
Model No.	Tube OD	A	B	T
2KS-075	3/4"	19.05	19.3	1.65
2KS-100	1"	25.4	30.2	1.65
2KS-150	1.5"	38.1	41.3	1.65
2KS-200	2"	50.8	58.7	1.65
2KS-250	2.5"	63.5	76.2	1.65
2KS-300	3"	76.2	93.7	1.65
2KS-400	4"	101.6	122.2	2.10

90° Short Elbows



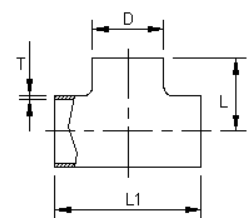
Model No.	Tube OD	D	L	T
2WC-075	3/4"	19.05	28.6	1.65
2WC-100	1"	25.4	38.1	1.65
2WC-150	1.5"	38.1	57.2	1.65
2WC-200	2"	50.8	76.2	1.65
2WC-250	2.5"	63.5	95.2	1.65
2WC-300	3"	76.2	114.3	1.65
2WC-400	4"	101.6	152.4	2.10
2WC-600	6"	152.4	228.6	2.77

90° Long Elbows



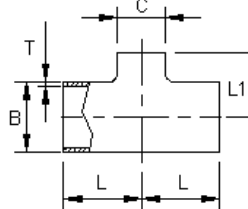
Model No.	Tube OD	D	L	T
2S-100	1"	25.4	52.4	1.65
2S-150	1.5"	38.1	74.6	1.65
2S-200	2"	50.8	103.2	1.65
2S-250	2.5"	63.5	131.8	1.65
2S-300	3"	76.2	160.3	1.65
2S-400	4"	101.6	211.1	2.10

Long Equal Tees



Model No.	Tube OD	D	L	L1	T
7WWW-075	3/4"	19.05	34.5	69.0	1.65
7WWW-100	1"	25.4	47.6	95.2	1.65
7WWW-150	1.5"	38.1	57.2	114.3	1.65
7WWW-200	2"	50.8	76.2	152.4	1.65
7WWW-250	2.5"	63.5	76.2	152.4	1.65
7WWW-300	3"	76.2	82.5	165.1	1.65
7WWW-400	4"	101.6	98.4	196.8	2.10
7WWW-600	6"	152.4	127.0	254.0	2.77

Reducing Tees

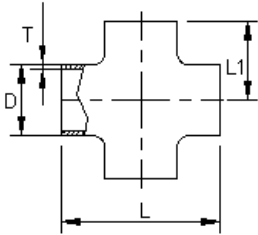


Model No.	Tube OD	B	C	L	L1	T
7RWWW-100-075	1"x3/4"	25.4	19.05	48.2	33.7	1.65
7RWWW-150-075	1.5"x3/4"	38.1	19.05	57.2	48.2	1.65
7RWWW-150-100	1.5"x1"	38.1	25.4	57.2	54.0	1.65
7RWWW-200-075	2"x3/4"	50.8	19.05	76.2	54.4	1.65
7RWWW-200-100	2"x1"	50.8	25.4	76.2	60.3	1.65
7RWWW-200-150	2"x1.5"	50.8	38.1	76.2	63.5	1.65
7RWWW-300-250	3"x2.5"	76.2	63.5	82.5	82.5	1.65
7RWWW-400-200	4"x2"	101.6	50.8	98.4	101.6	2.10
7RWWW-400-250	4"x2.5"	101.6	63.5	98.4	95.3	2.10
7RWWW-400-300	4"x3"	101.6	76.2	98.4	95.3	2.10
7RWWW-600-300	6"x3"	152.4	76.2	127	120.7	2.77
7RWWW-600-400	6"x4"	152.4	101.6	127	123.8	2.77

Weld Fittings

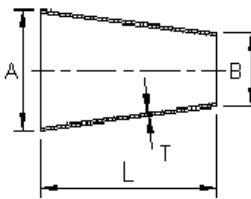
Dimension (mm)

4-Way Crosses



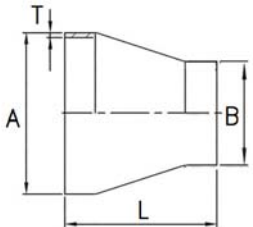
Model No.	Tube OD	D	L	L1	T
9WWW-075	3/4"	19.05	69.0	34.5	1.65
9WWW-100	1"	25.4	95.2	47.6	1.65
9WWW-150	1.5"	38.1	114.3	57.2	1.65
9WWW-200	2"	50.8	152.4	76.2	1.65
9WWW-250	2.5"	63.5	152.4	76.2	1.65
9WWW-300	3"	76.2	165.1	82.5	1.65
9WWW-400	4"	101.6	196.8	98.4	2.10
9WWW-600	6"	152.4	254.0	127.0	2.77

Concentric Reducers



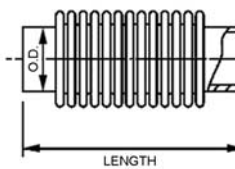
Model No.	Tube OD	A	B	L	T
31W-100-075	1"x3/4"	25.4	19.05	35.0	1.65
31W-150-075	1.5"x3/4"	38.1	19.05	60.3	1.65
31W-150-100	1.5"x1"	38.1	25.4	60.3	1.65
31W-200-100	2"x1"	50.8	25.4	60.3	1.65
31W-200-150	2"x1.5"	50.8	38.1	60.3	1.65
31W-250-150	2.5"x1.5"	63.5	38.1	60.3	1.65
31W-250-200	2.5"x2"	63.5	50.8	60.3	1.65
31W-300-200	3"x2"	76.2	50.8	92.0	1.65
31W-300-250	3"x2.5"	76.2	63.5	92.0	1.65
31W-400-200	4"x2"	101.6	50.8	92.0	2.10
31W-400-250	4"x2.5"	101.6	63.5	92.0	2.10
31W-400-300	4"x3"	101.6	76.2	92.0	2.10
31W-600-300	6"x3"	152.4	76.2	152.4	2.77
31W-600-400	6"x4"	152.4	101.6	152.4	2.77

Conical Reducers



Model No.	Tube OD	A	B	L	T
B-31W-100-075	1"x3/4"	25.4	19.05	35.0	1.55
B-31W-150-075	1.5"x3/4"	38.1	19.05	60.3	1.65
B-31W-150-100	1.5"x1"	38.1	25.4	60.3	1.65
B-31W-200-100	2"x1"	50.8	25.4	60.3	1.65
B-31W-200-150	2"x1.5"	50.8	38.1	60.3	1.65

Welding Bellows



TUBE OD	LENGTH
3/4"	CUSTOM-MADE
1"	CUSTOM-MADE
1.5"	CUSTOM-MADE
2"	CUSTOM-MADE
2.5"	CUSTOM-MADE
3"	CUSTOM-MADE
4"	CUSTOM-MADE